

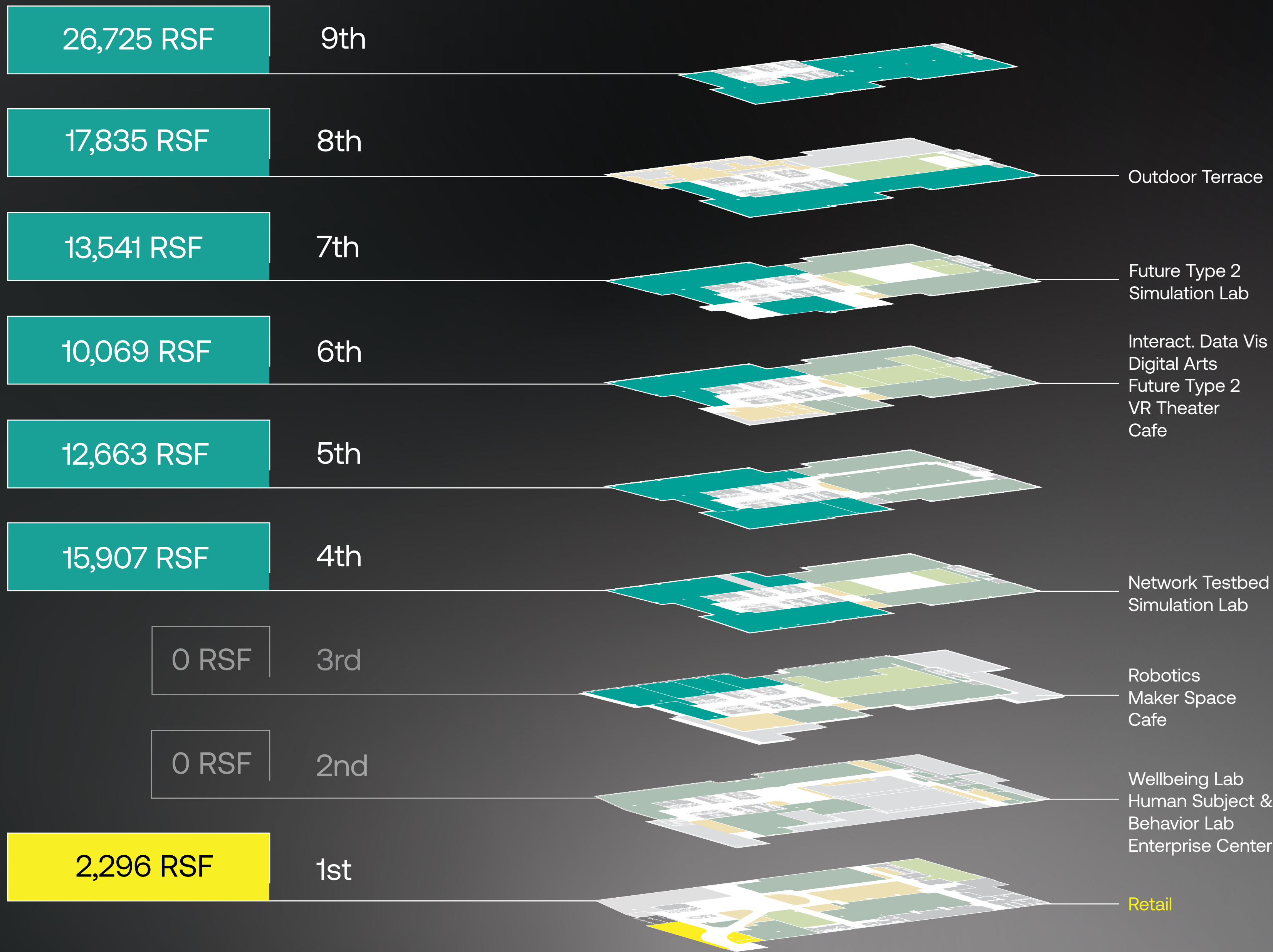
# FUSE

at Mason Square



GEORGE MASON UNIVERSITY  
Schar School of Policy and Government  
School for Conflict Resolution  
School of Business  
Antonin Scalia

AVAILABLE

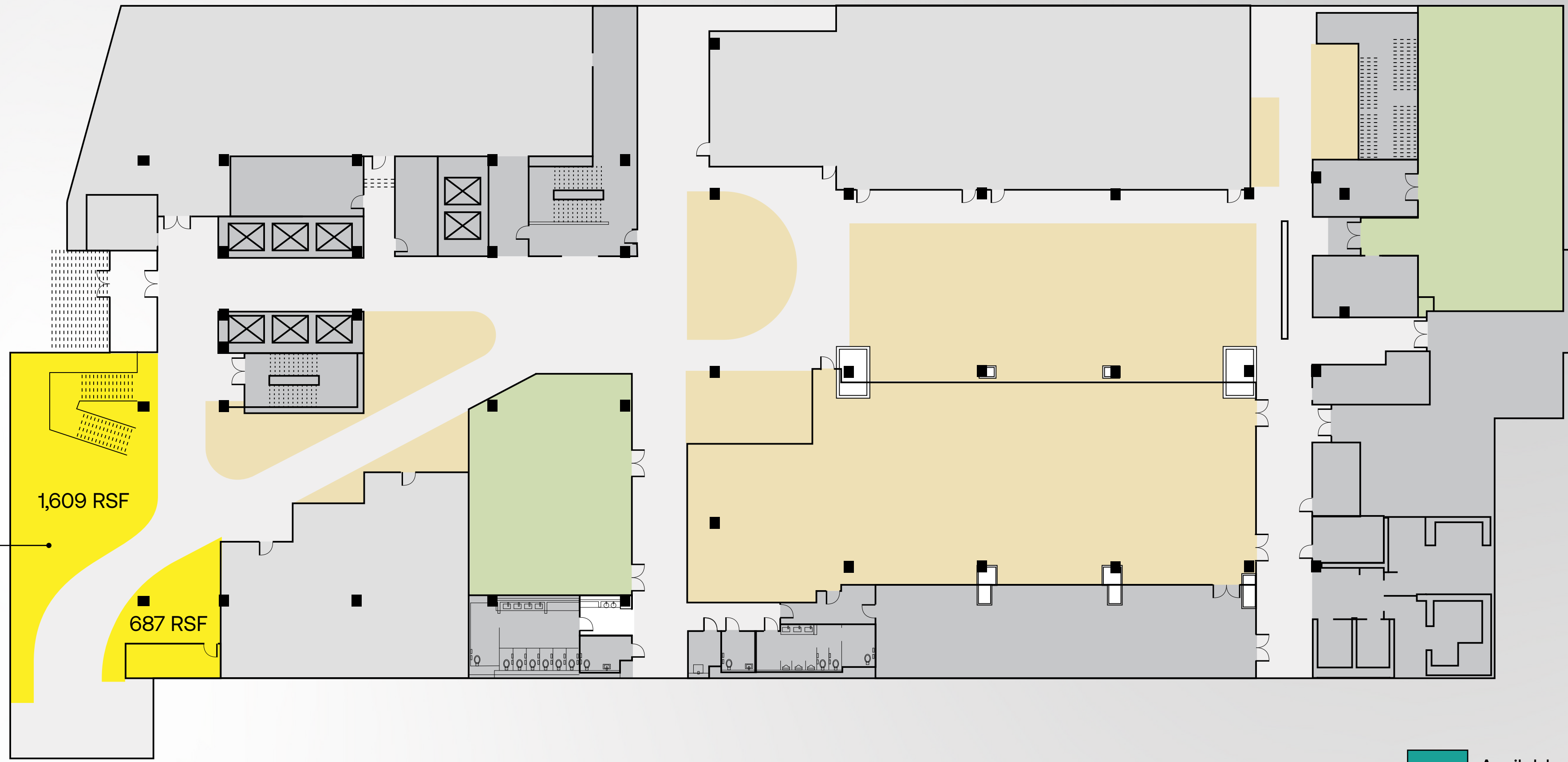


- Available Commercial Space
- Available Retail Space
- Tech Lab
- Amenities
- Leased Space



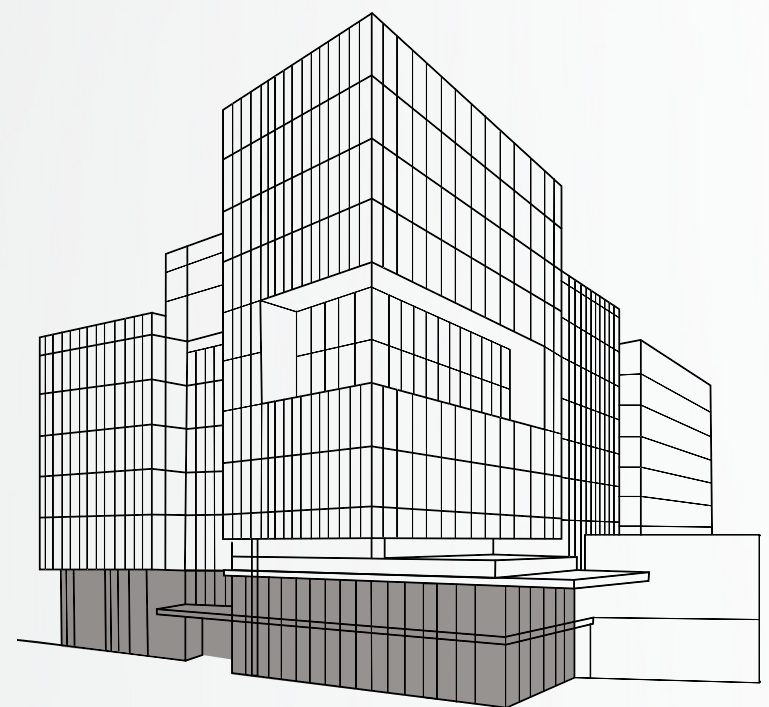
# 1st Floor

2,296 RSF



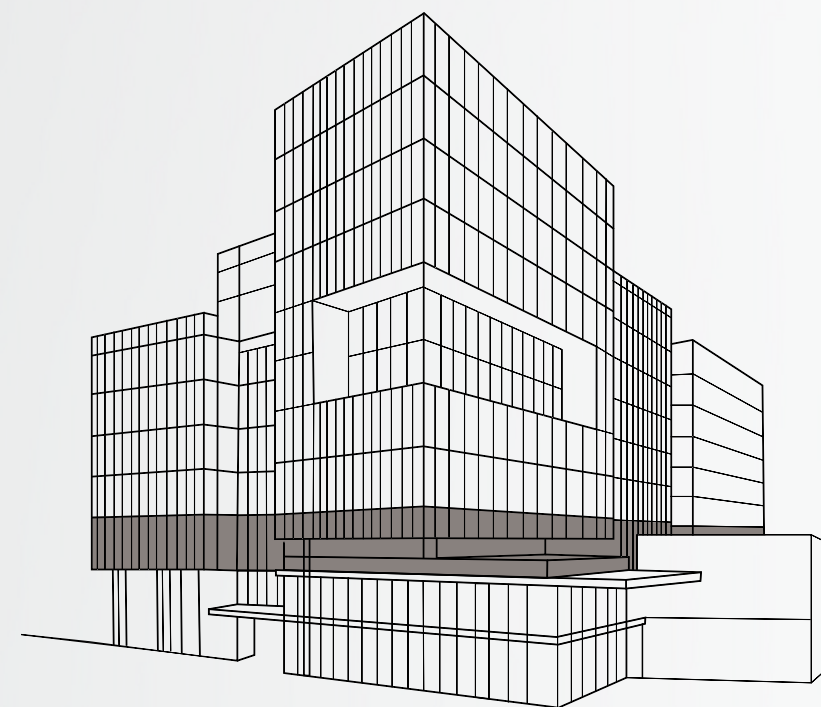
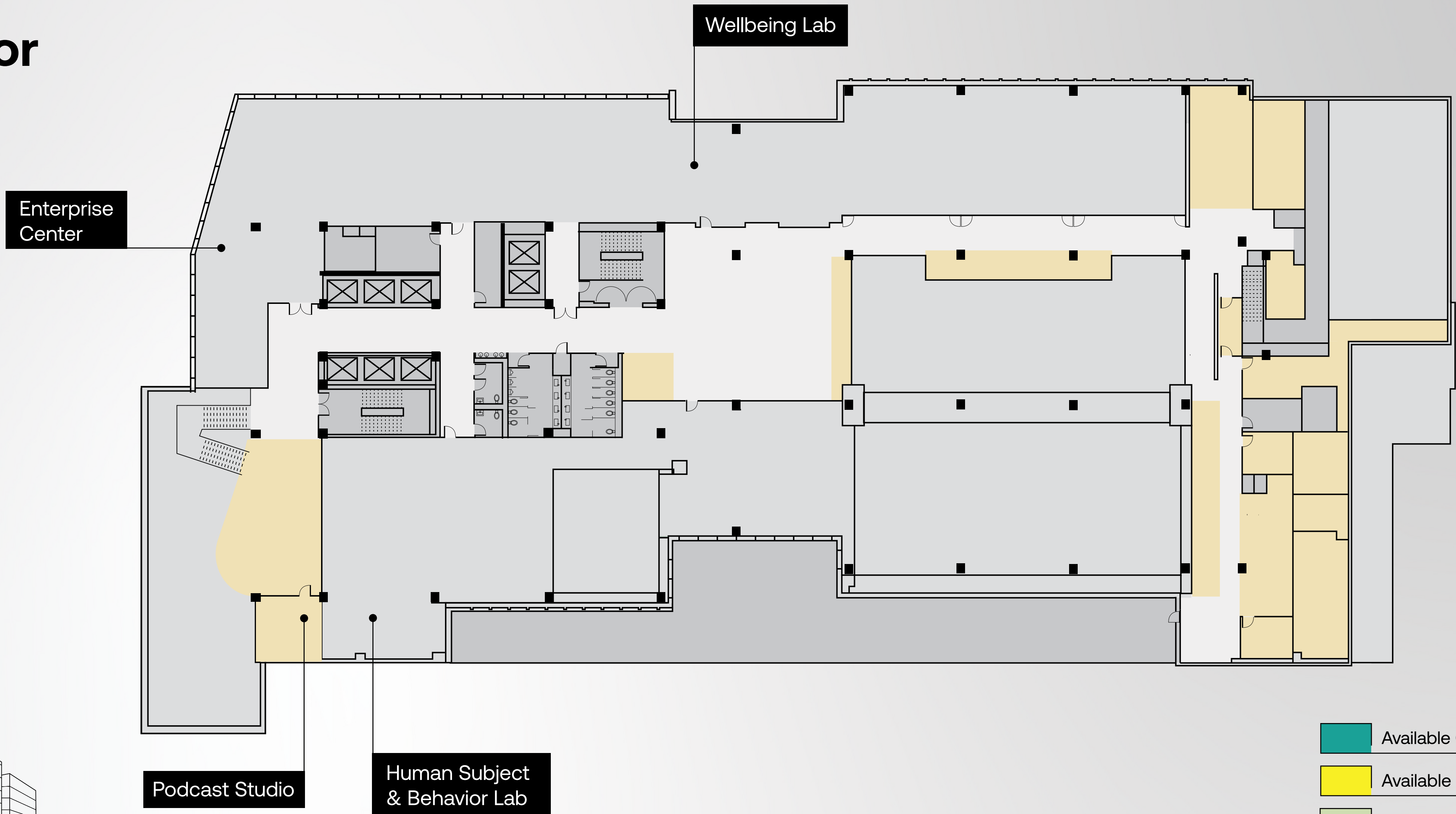
1,609 RSF




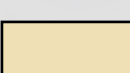
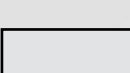
687 RSF



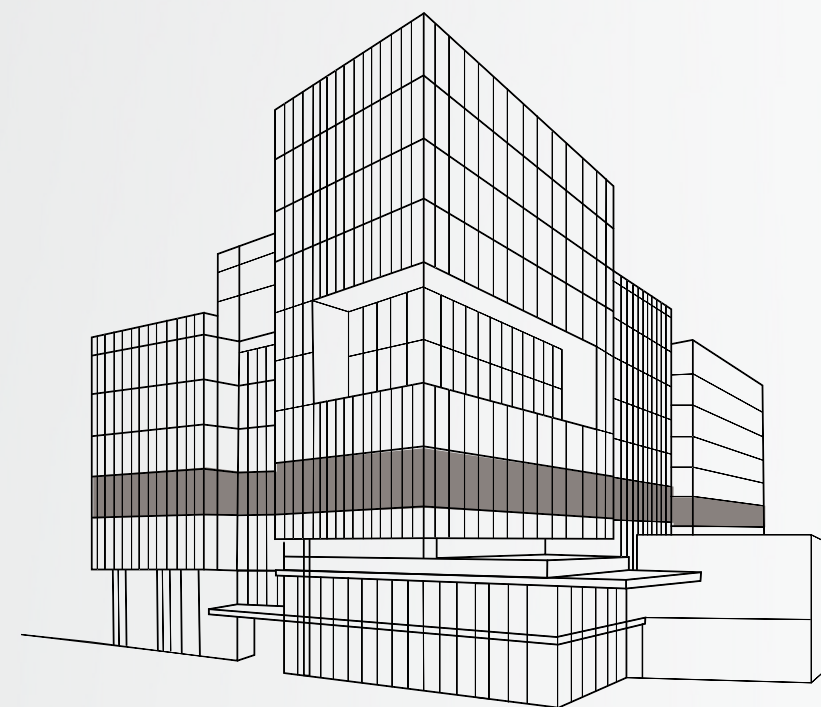
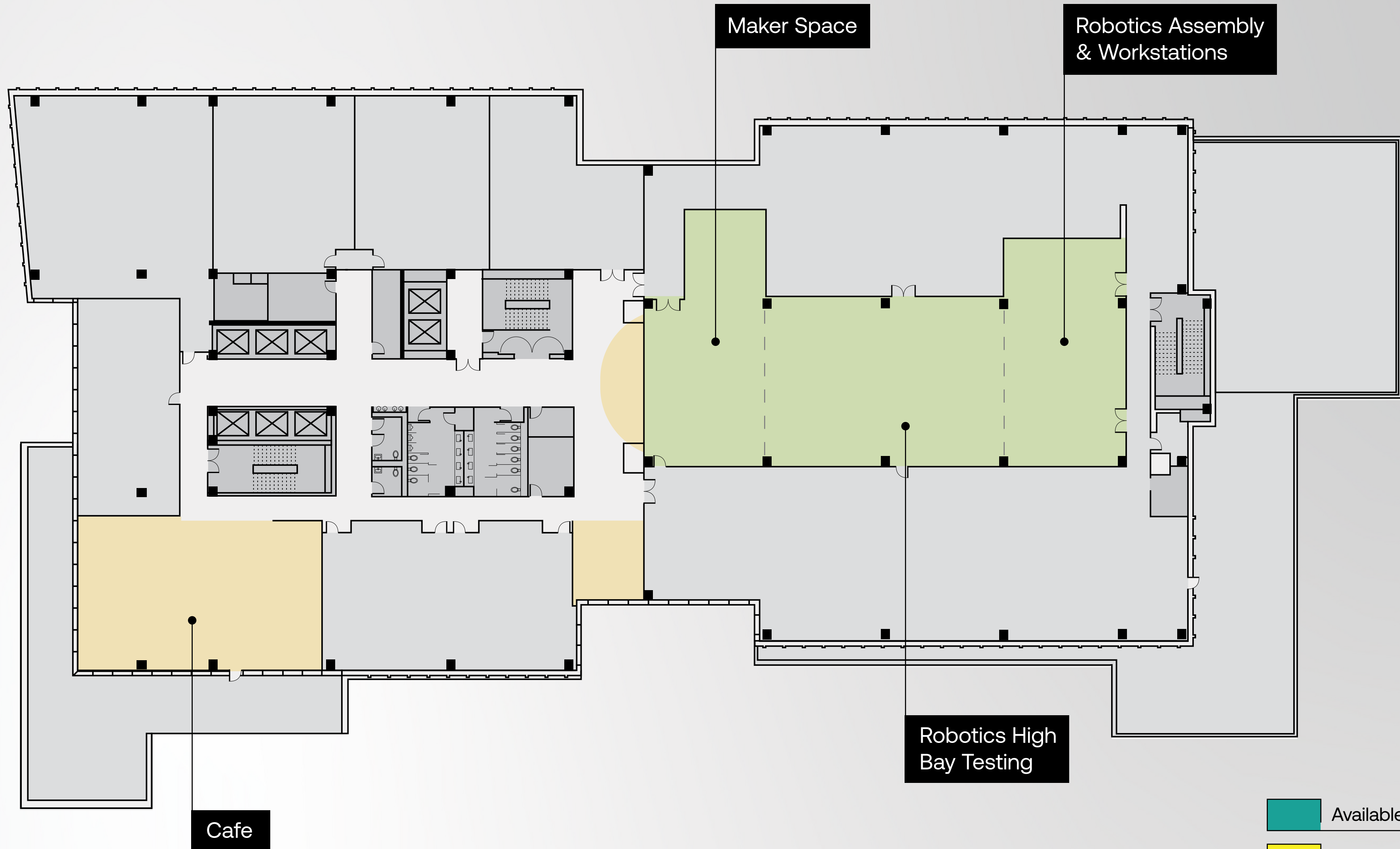
- Available Commercial Space
- Available Retail Space
- Tech Lab
- Amenities
- Leased Space




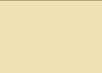
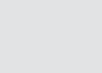
# 2nd Floor



-  Available Commercial Space
-  Available Retail Space
-  Tech Lab
-  Amenities
-  Leased Space

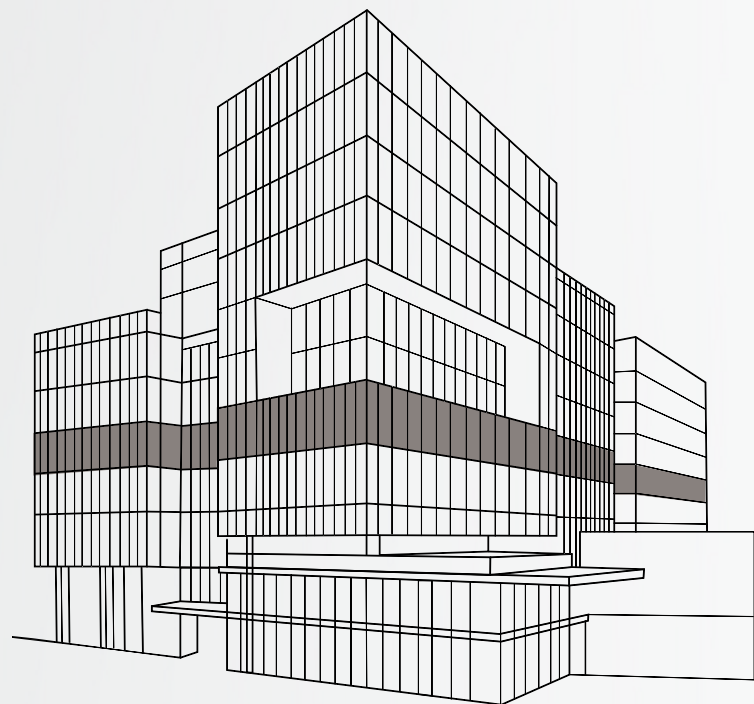
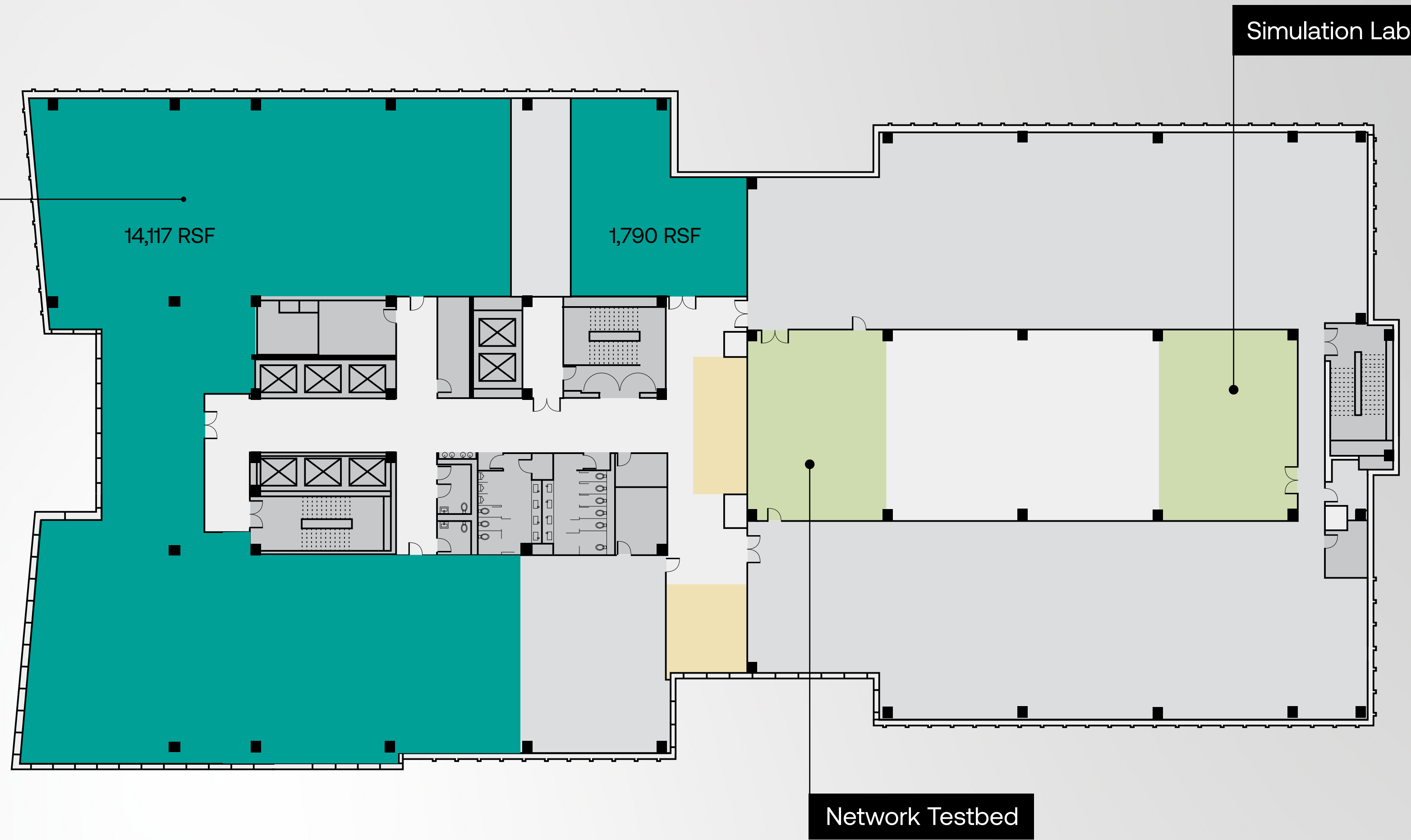
# 3rd Floor



-  Available Commercial Space
-  Available Retail Space
-  Tech Lab
-  Amenities
-  Leased Space

# 4th Floor

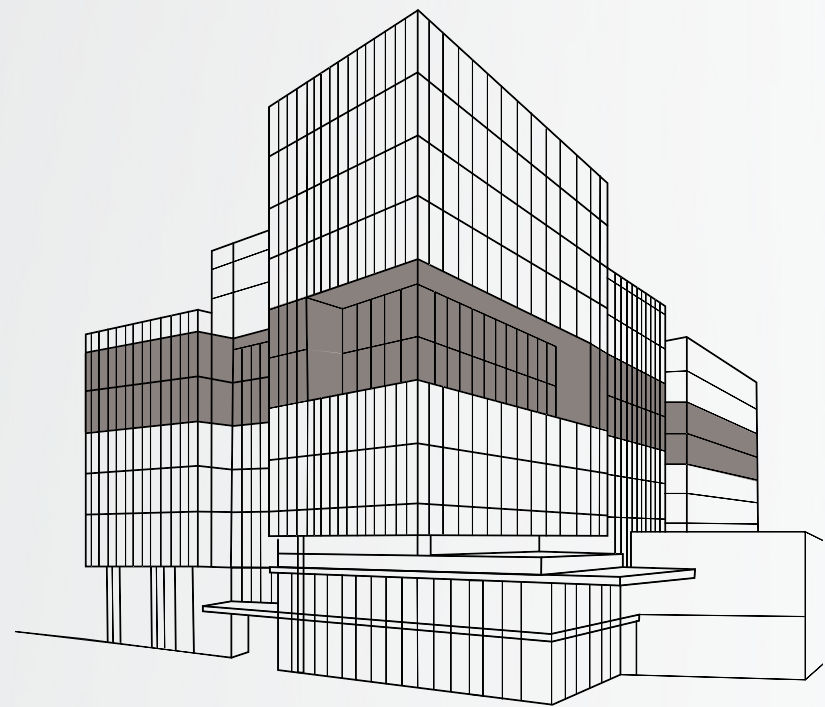
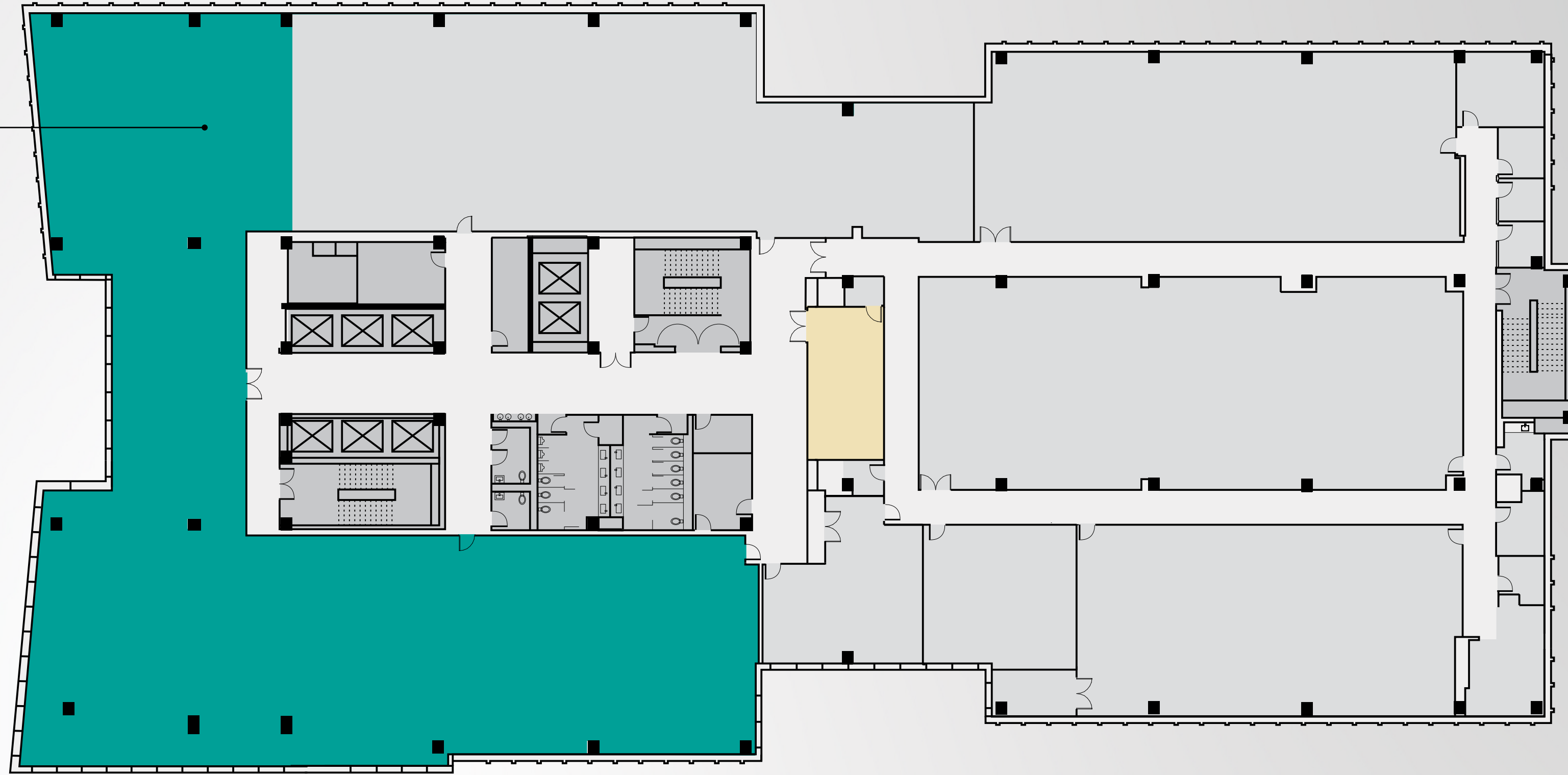
15,907 RSF



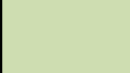

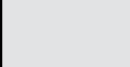


- Available Commercial Space
- Available Retail Space
- Tech Lab
- Amenities
- Leased Space

# 5th Floor

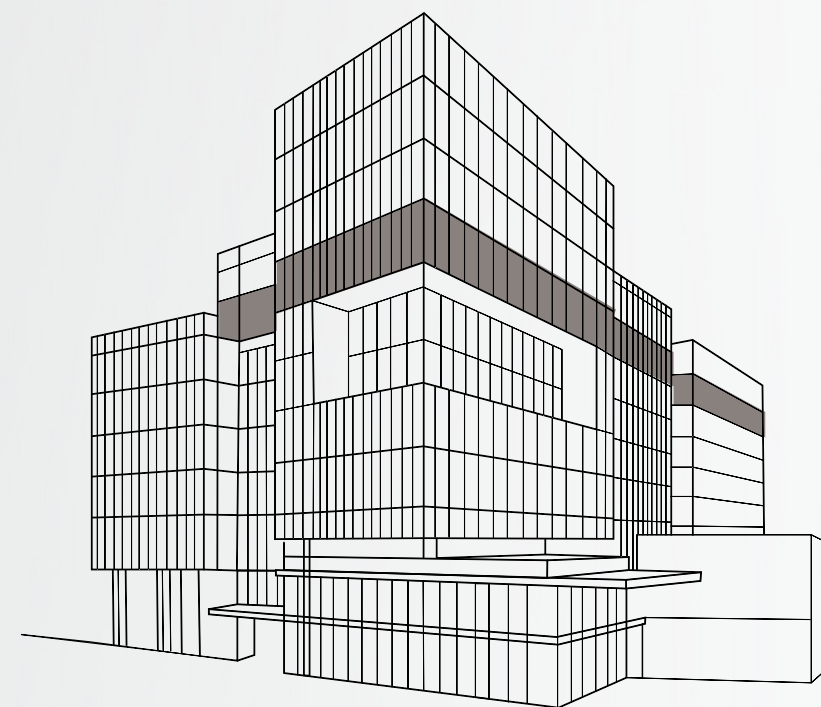
12,663 RSF




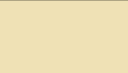
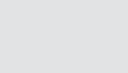


-  Available Commercial Space
-  Available Retail Space
-  Tech Lab
-  Amenities
-  Leased Space

# 6th Floor

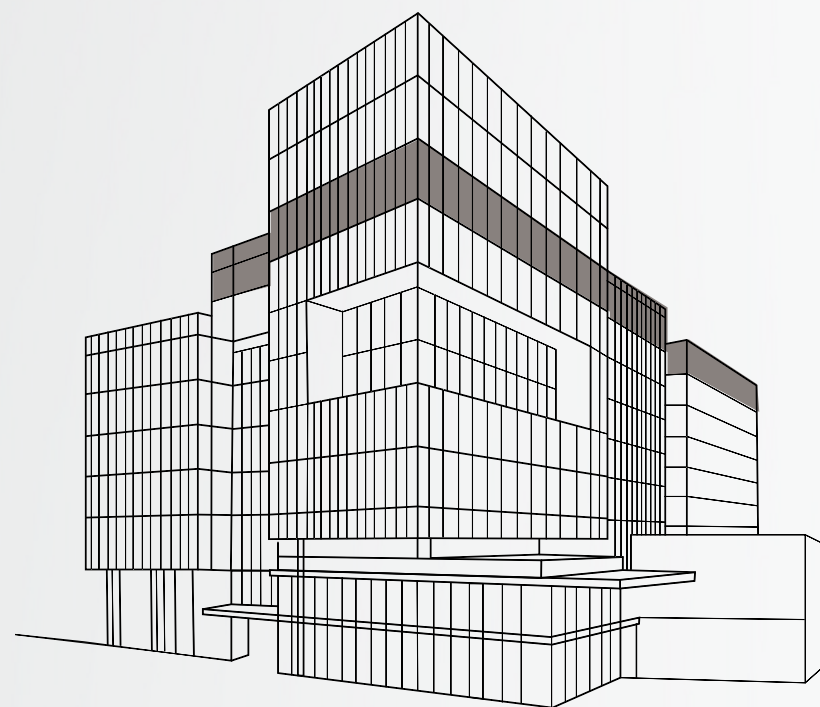
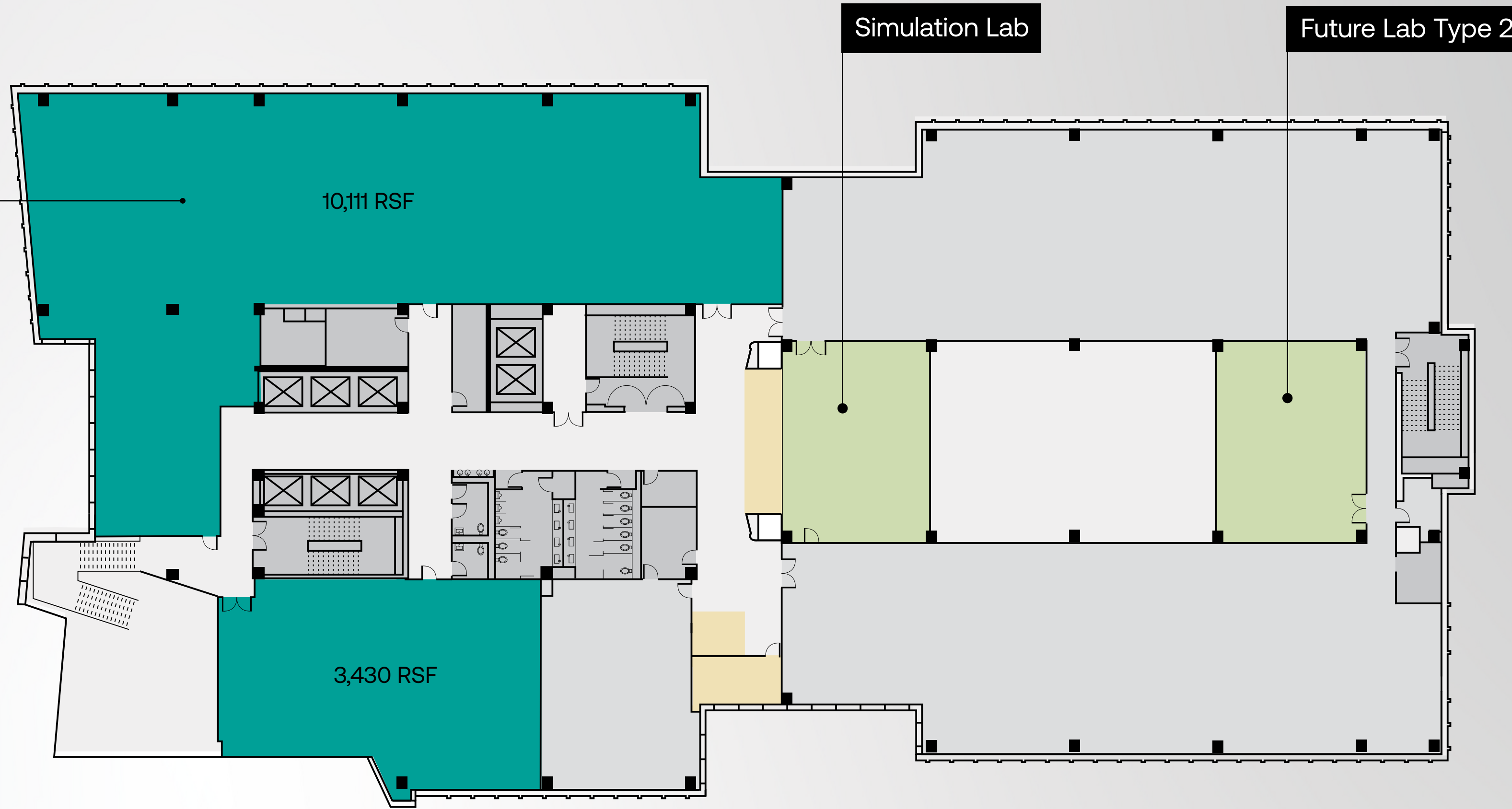
10,069 RSF



-  Available Commercial Space
-  Available Retail Space
-  Tech Lab
-  Amenities
-  Leased Space

# 7th Floor

13,541 RSF

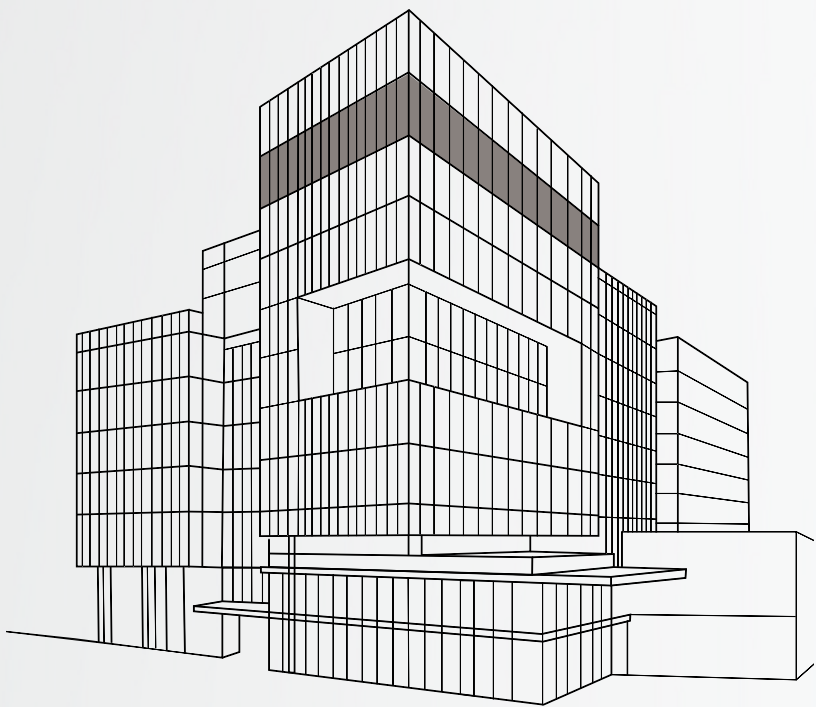




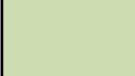
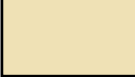
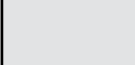
- Available Commercial Space
- Available Retail Space
- Tech Lab
- Amenities
- Leased Space

# 8th Floor

17,835 RSF

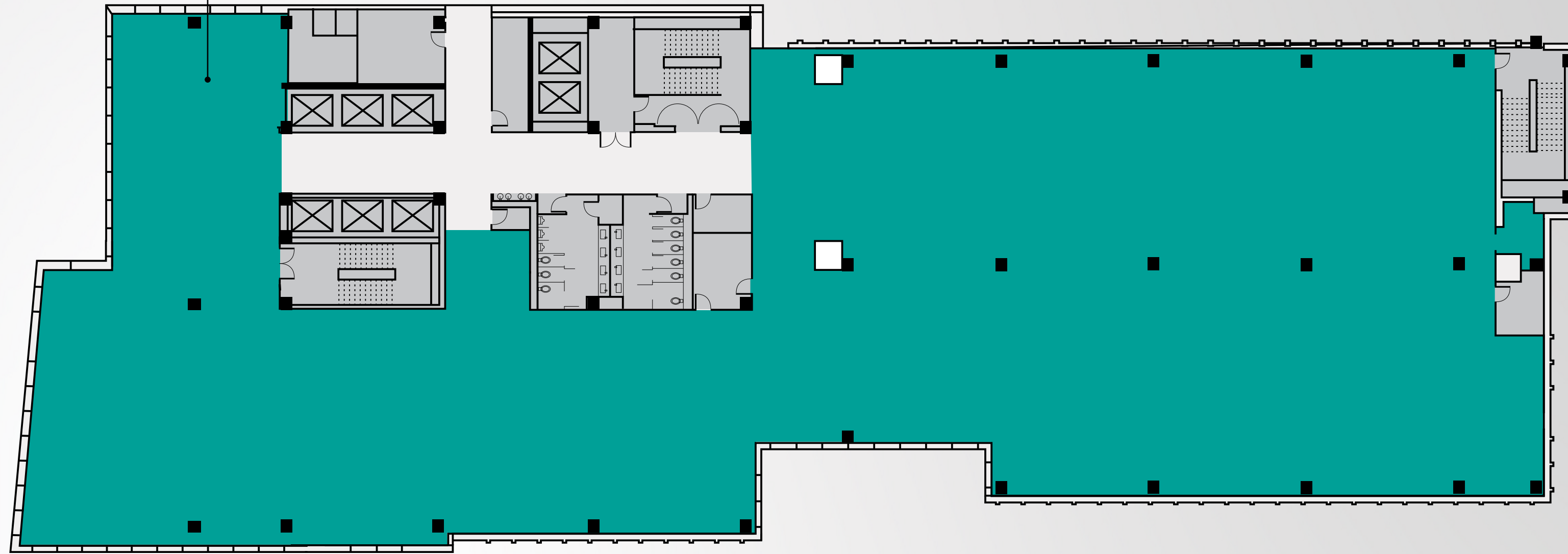
Outdoor Terrace



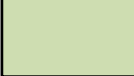
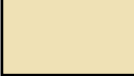
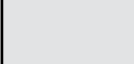


-  Available Commercial Space
-  Available Retail Space
-  Tech Lab
-  Amenities
-  Leased Space

# 9th Floor

26,725 RSF



-  Available Commercial Space
-  Available Retail Space
-  Tech Lab
-  Amenities
-  Leased Space



**BRIAN NAUMICK**

Vice President

[brian.naumick@edgemoor.com](mailto:brian.naumick@edgemoor.com)

202.312.5780

**NEWMARK**

**ANDY KLAFF**

Executive Managing Director

[andy.klaff@nmrk.com](mailto:andy.klaff@nmrk.com)

703.918.0211

[fuseatmasonsquare.com](http://fuseatmasonsquare.com)

# FUSE

at Mason Square

