

FUSE

at Mason Square



AVAILABLE

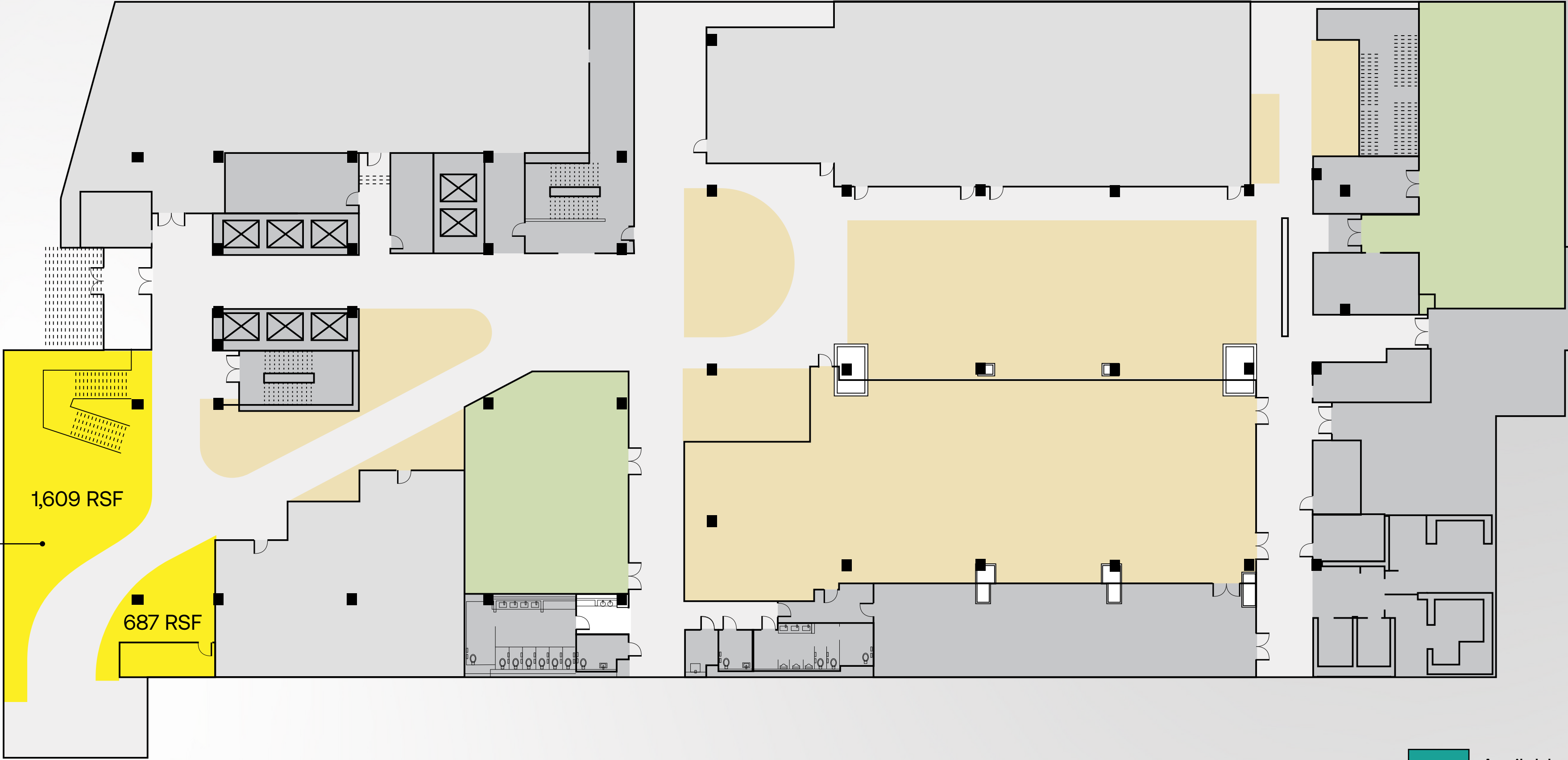


- Available Commercial Space
- Available Retail Space
- Tech Lab
- Amenities
- Leased Space



1st Floor

2,296 RSF



- Available Commercial Space
- Available Retail Space
- Tech Lab
- Amenities
- Leased Space

2nd Floor



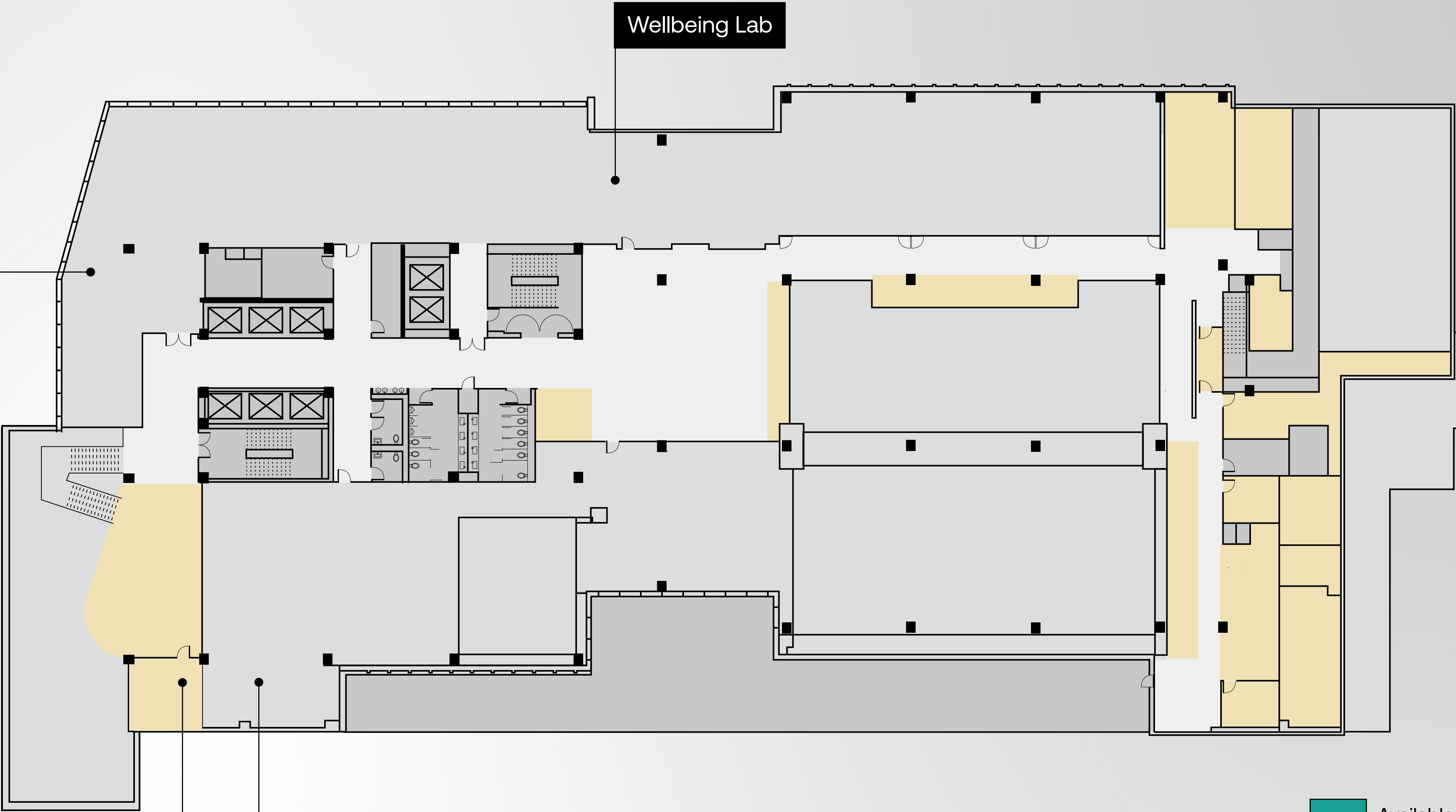
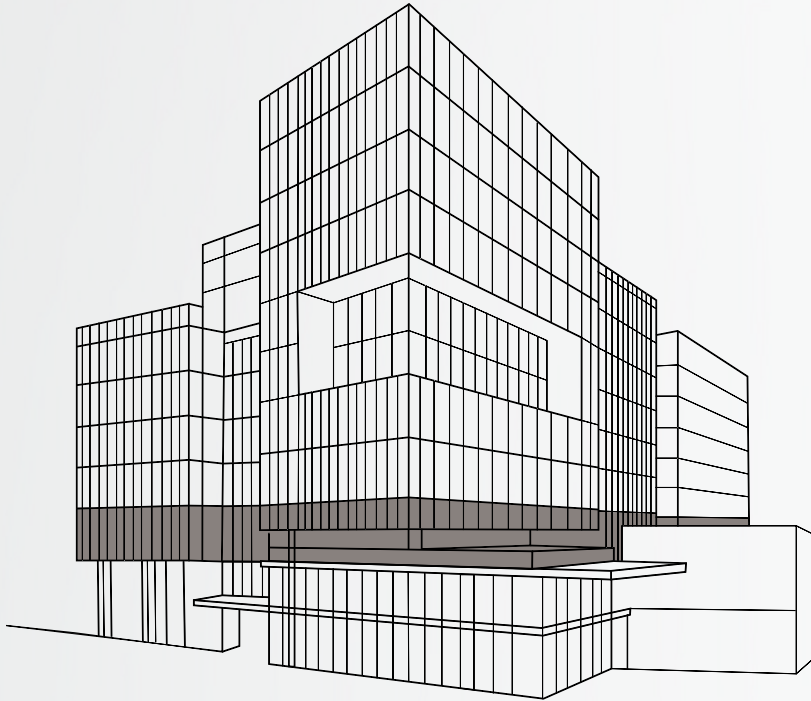
Enterprise Center

Wellbeing Lab

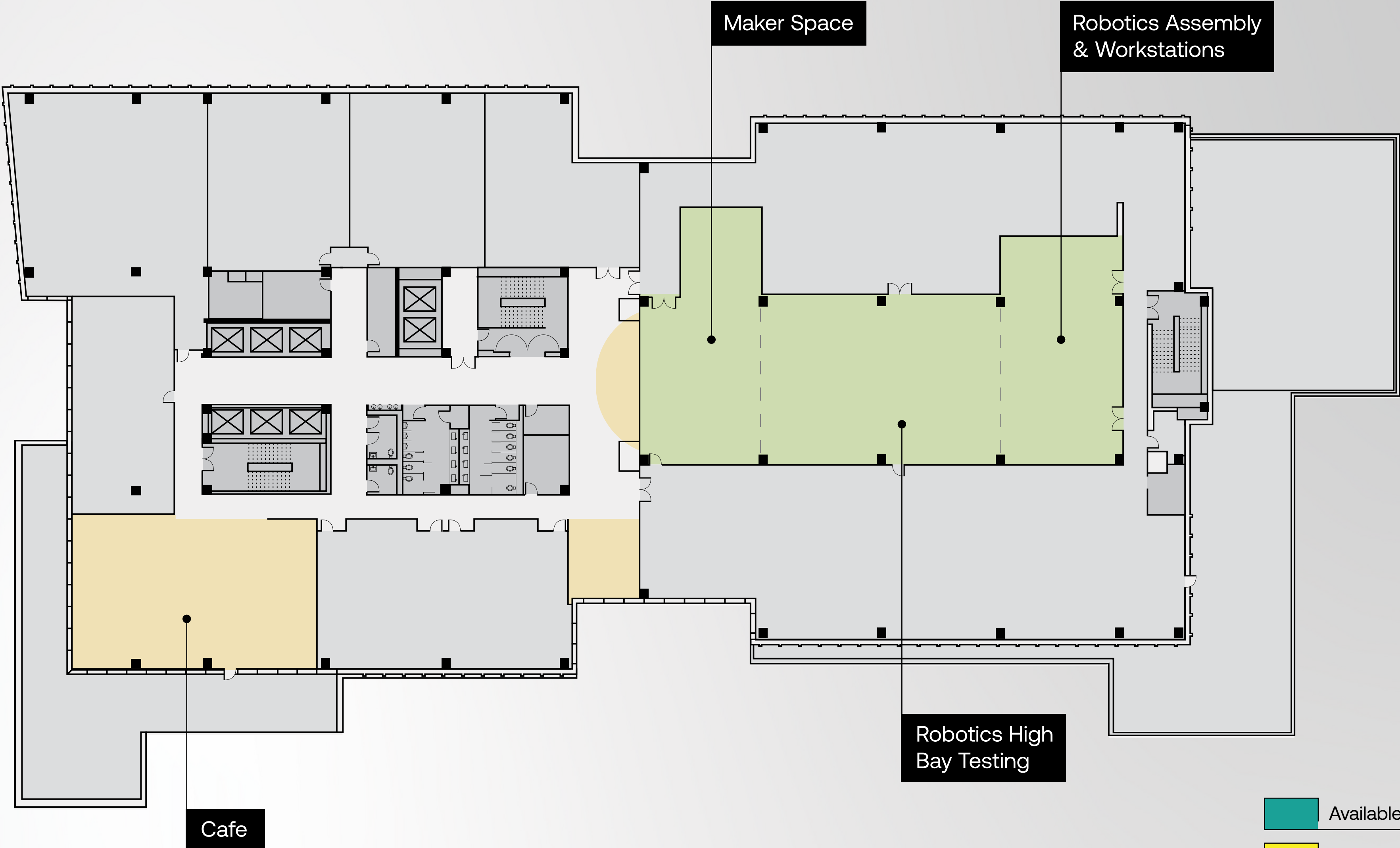
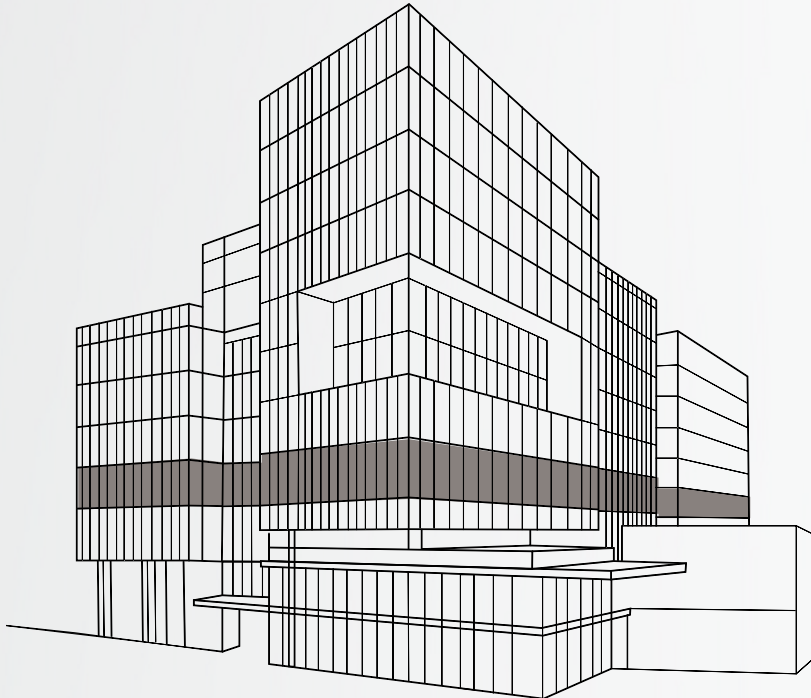
Podcast Studio

Human Subject & Behavior Lab

- Available Commercial Space
- Available Retail Space
- Tech Lab
- Amenities
- Leased Space



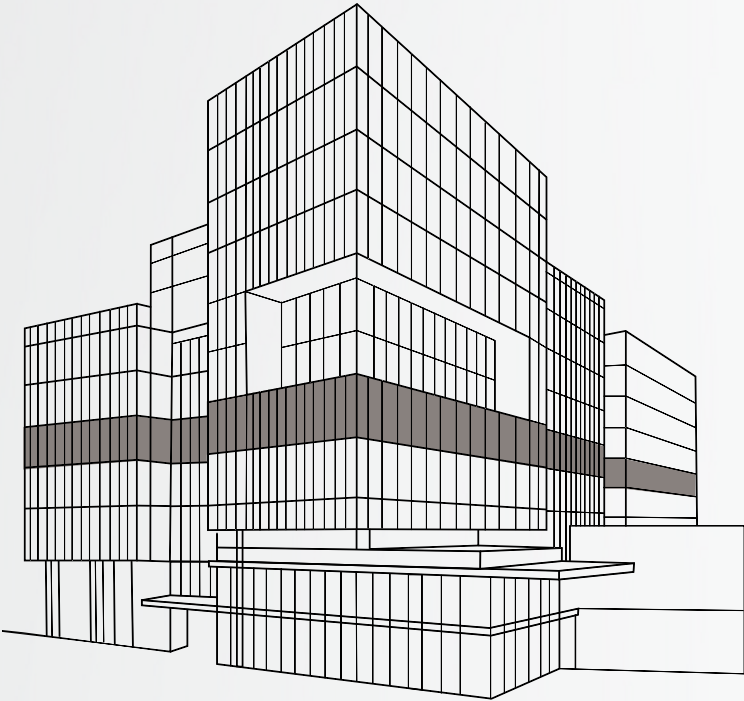
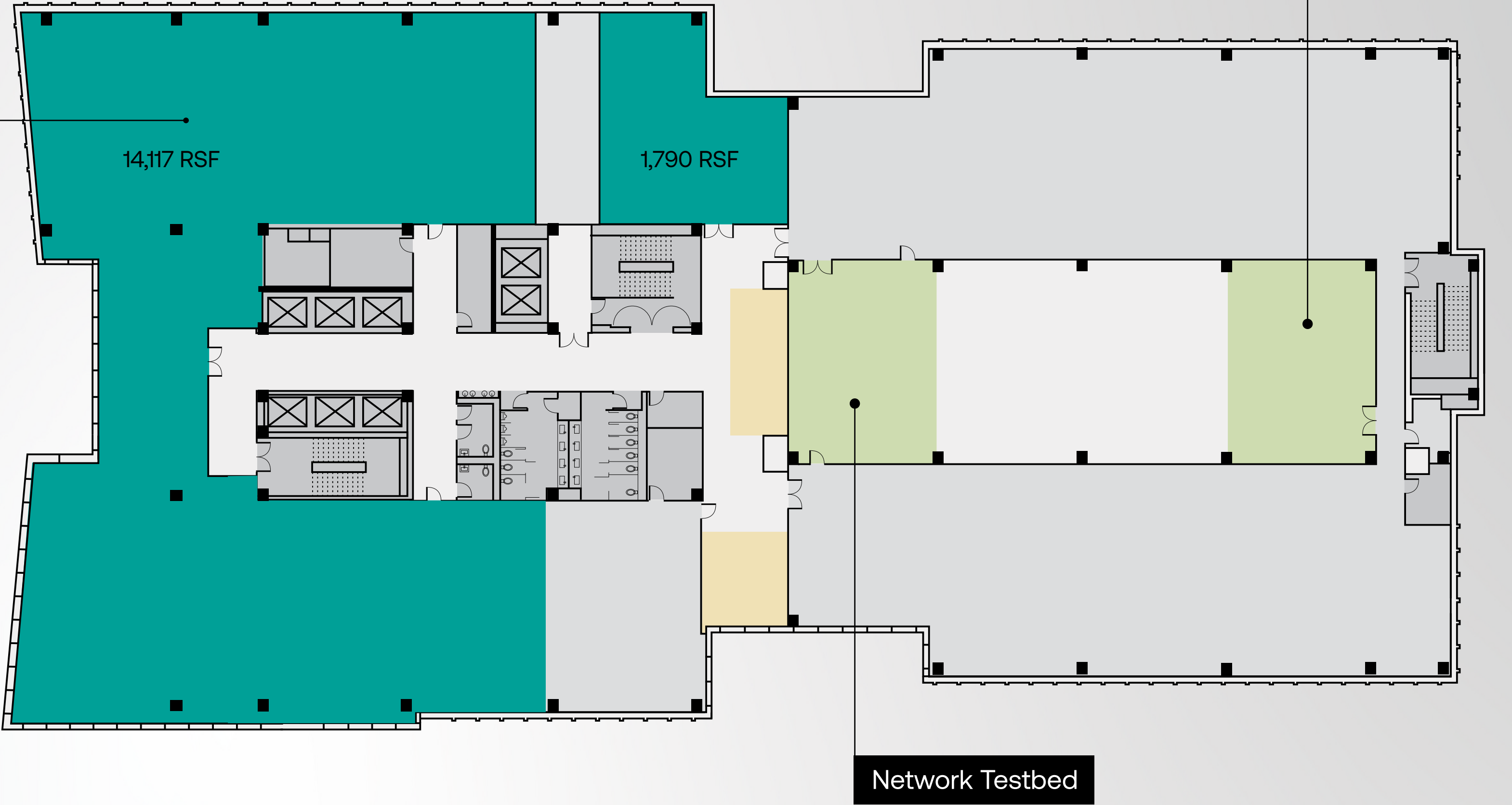
3rd Floor



- Available Commercial Space
- Available Retail Space
- Tech Lab
- Amenities
- Leased Space

4th Floor

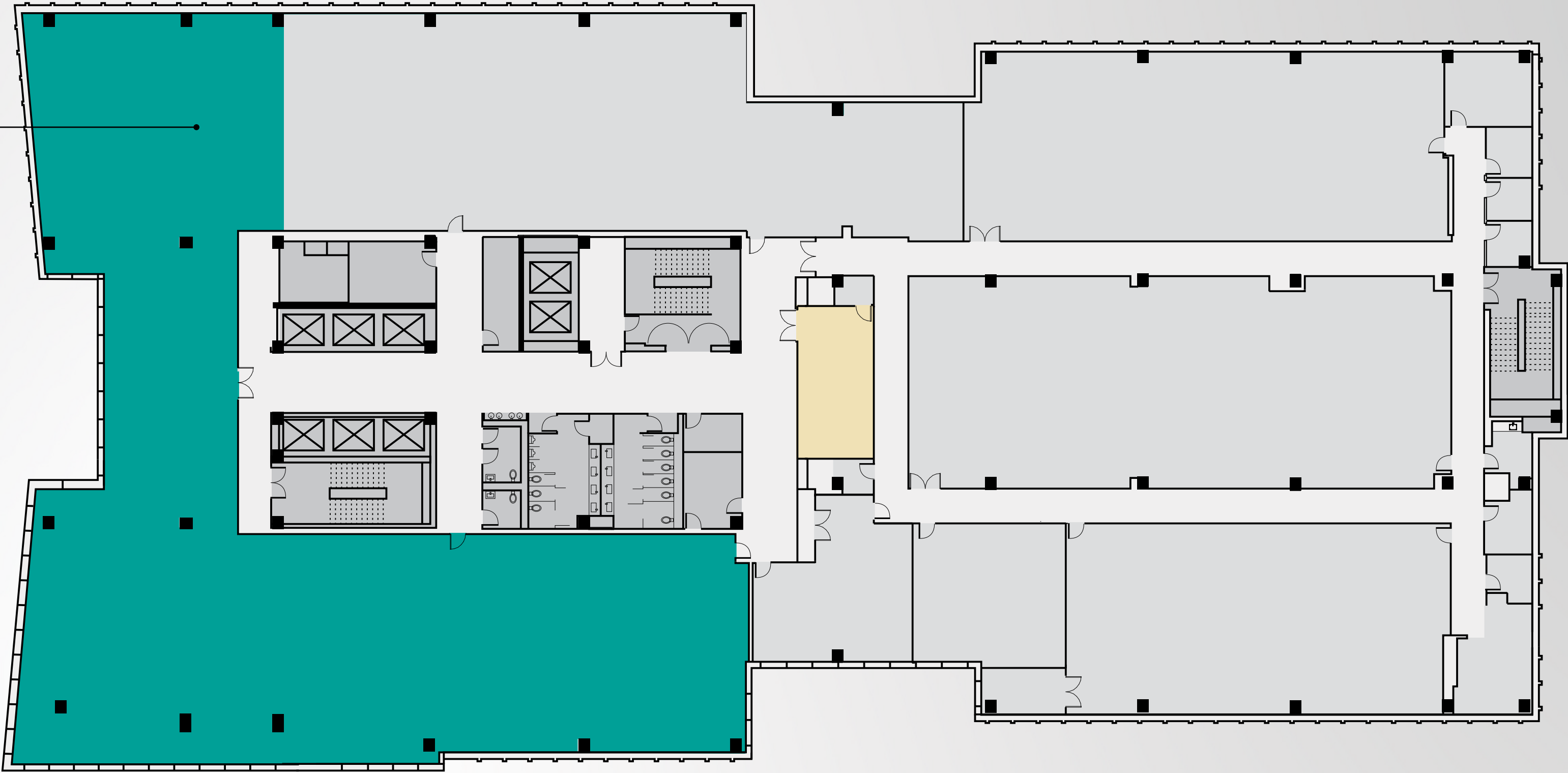
15,907 RSF



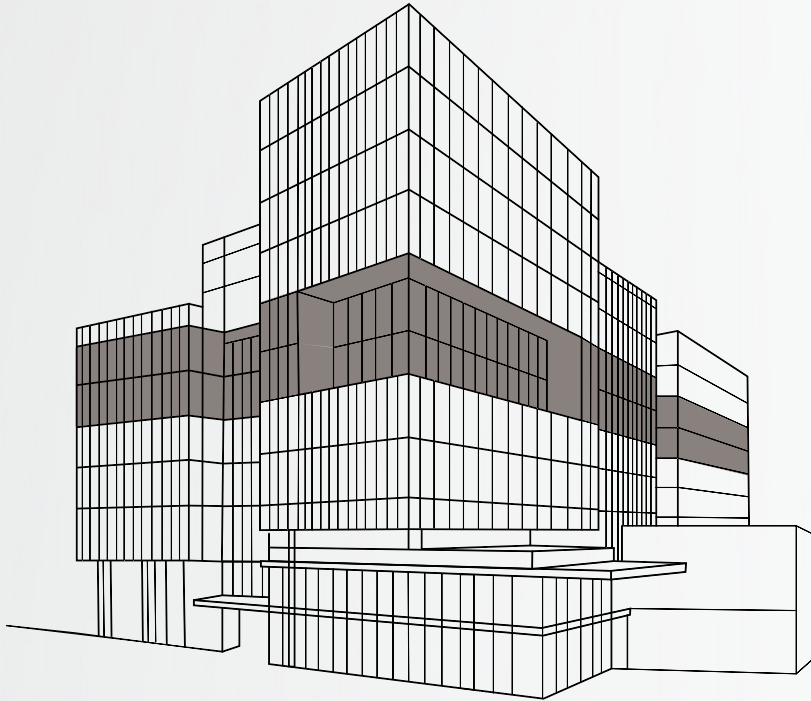
- Available Commercial Space
- Available Retail Space
- Tech Lab
- Amenities
- Leased Space

5th Floor

12,663 RSF



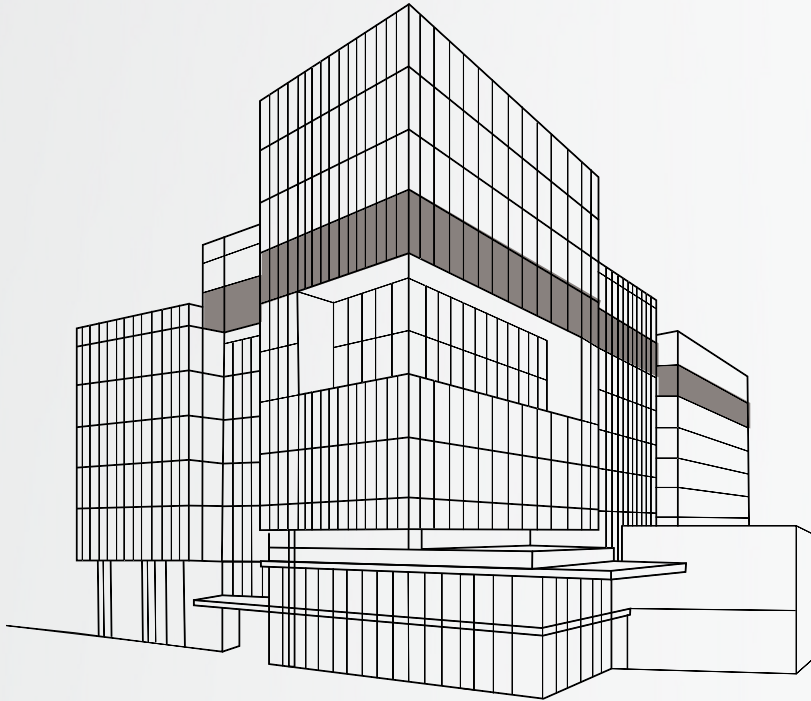
Secure Research Floor



- Available Commercial Space
- Available Retail Space
- Tech Lab
- Amenities
- Leased Space

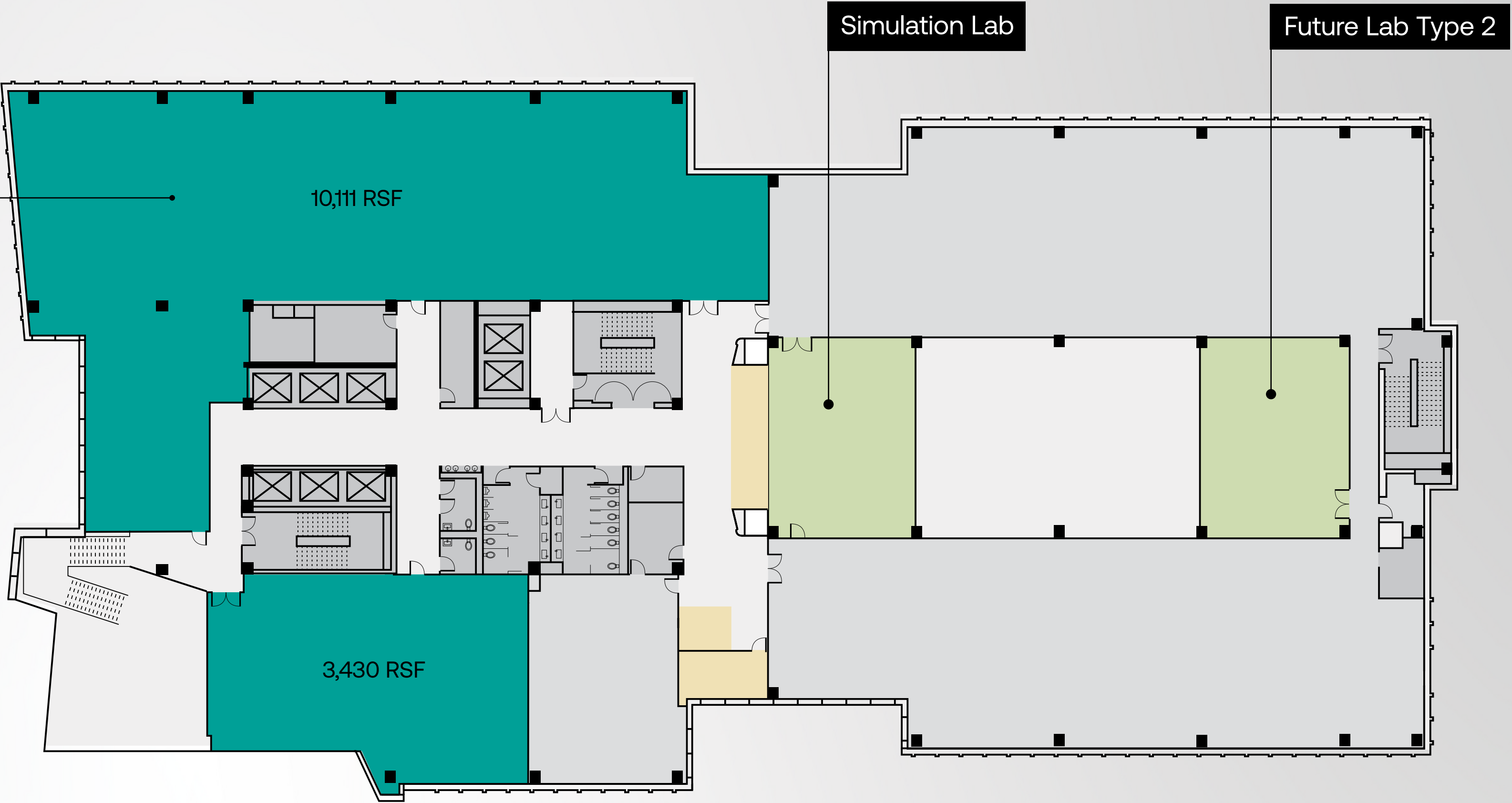
6th Floor

10,069 RSF



7th Floor

13,541 RSF

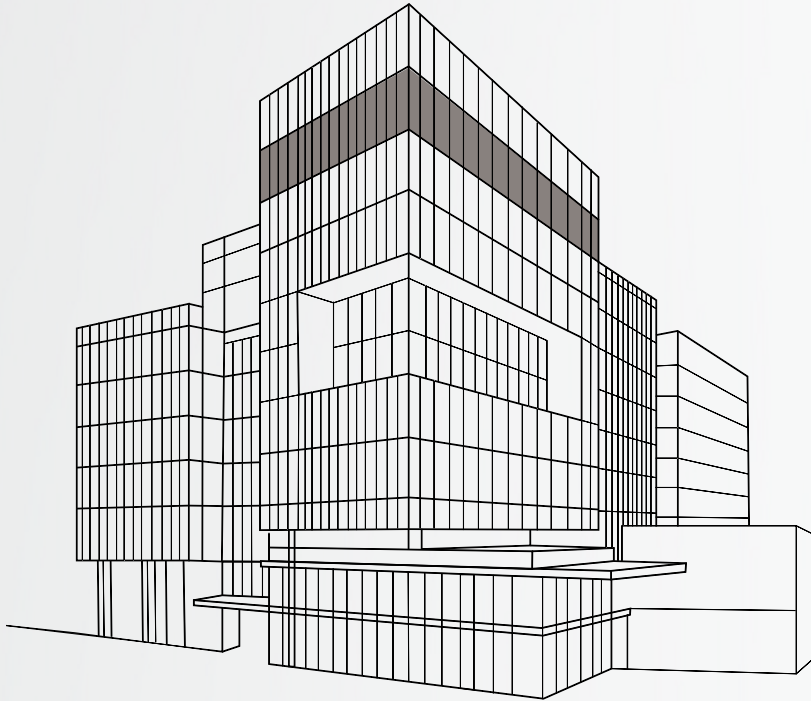
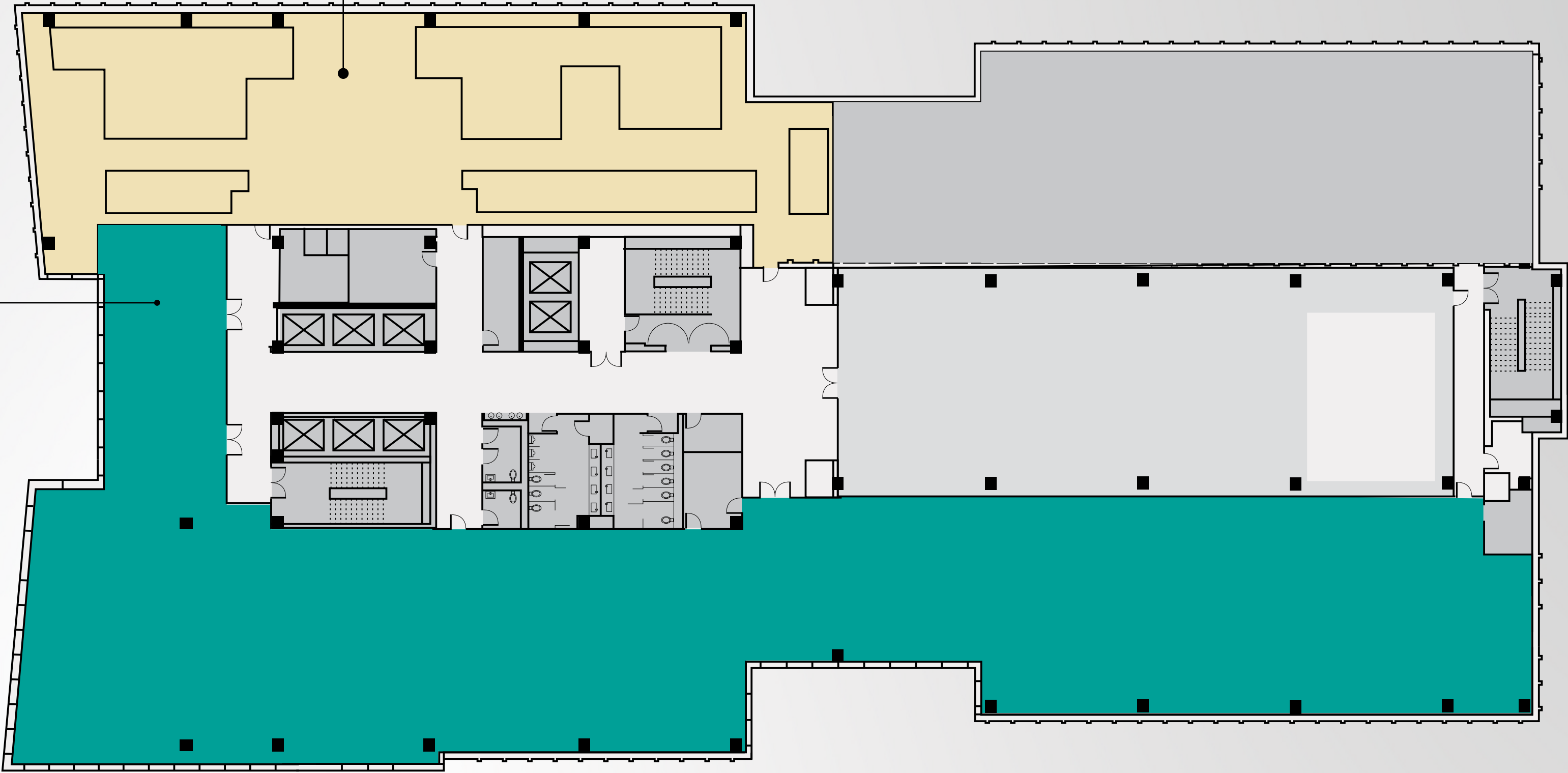


- Available Commercial Space
- Available Retail Space
- Tech Lab
- Amenities
- Leased Space

8th Floor

17,835 RSF

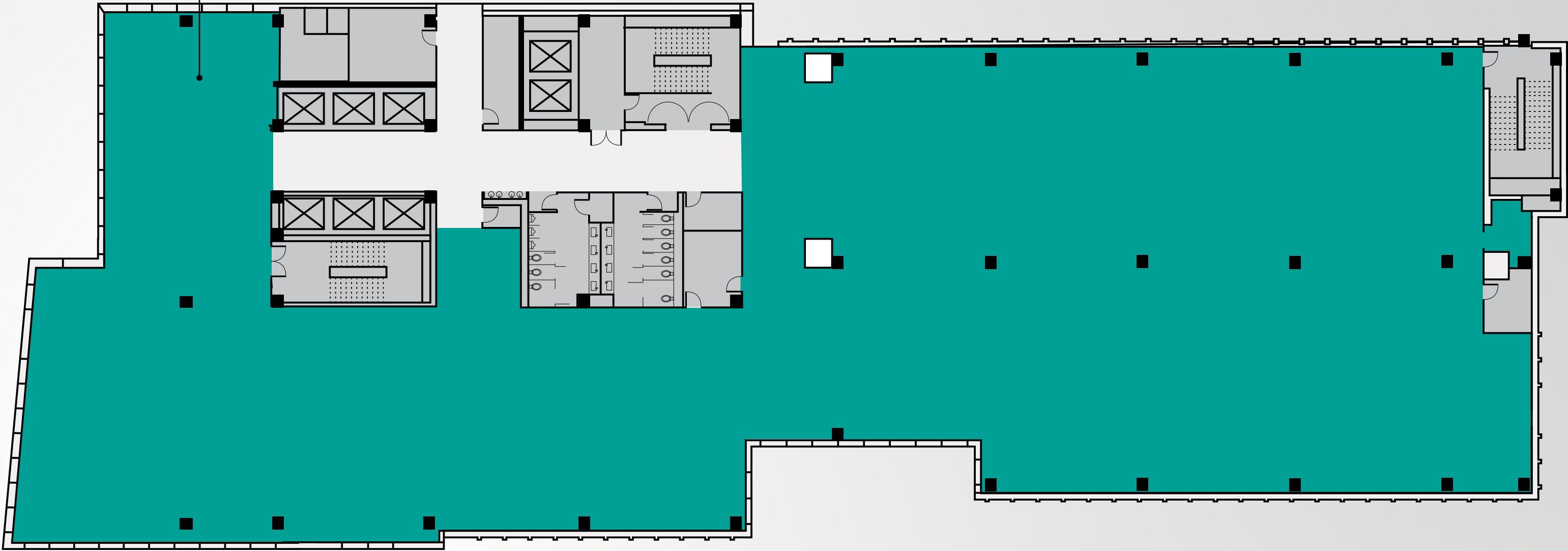
Outdoor Terrace



- Available Commercial Space
- Available Retail Space
- Tech Lab
- Amenities
- Leased Space

9th Floor

26,725 RSF



- Available Commercial Space
- Available Retail Space
- Tech Lab
- Amenities
- Leased Space



BRIAN NAUMICK

Vice President

brian.naumick@edgemoor.com

202.312.5780

NEWMARK

ANDY KLAFF

Executive Managing Director

andy.klaff@nmrk.com

703.918.0211

fuseatmasonsquare.com

FUSE

at Mason Square

