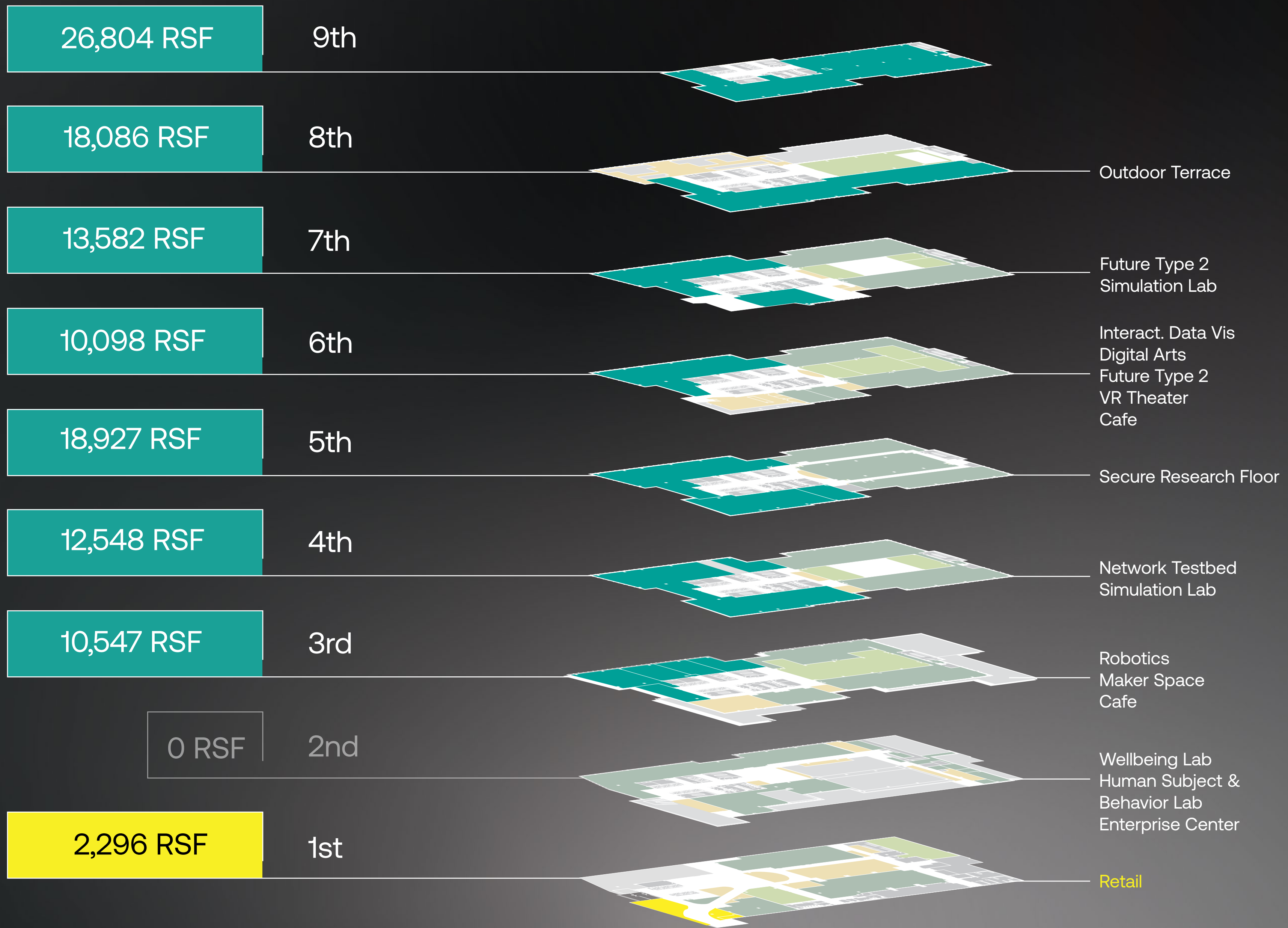


FUSE

at Mason Square



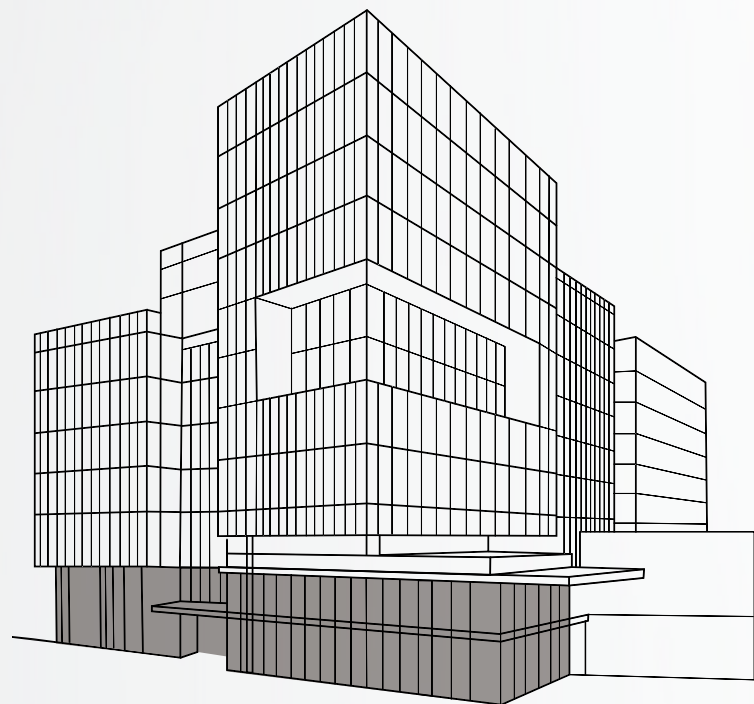
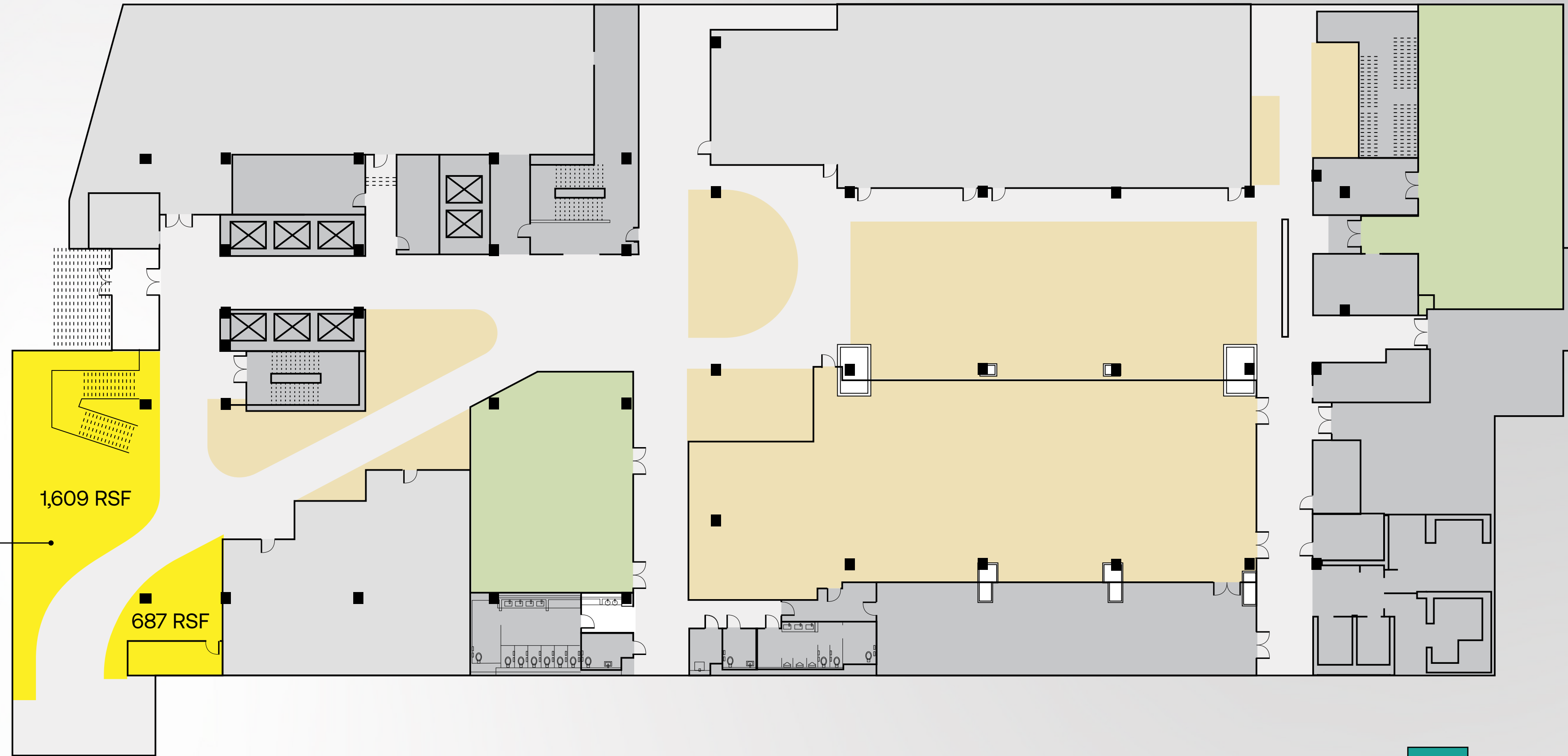
AVAILABLE



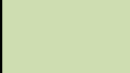

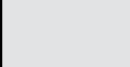




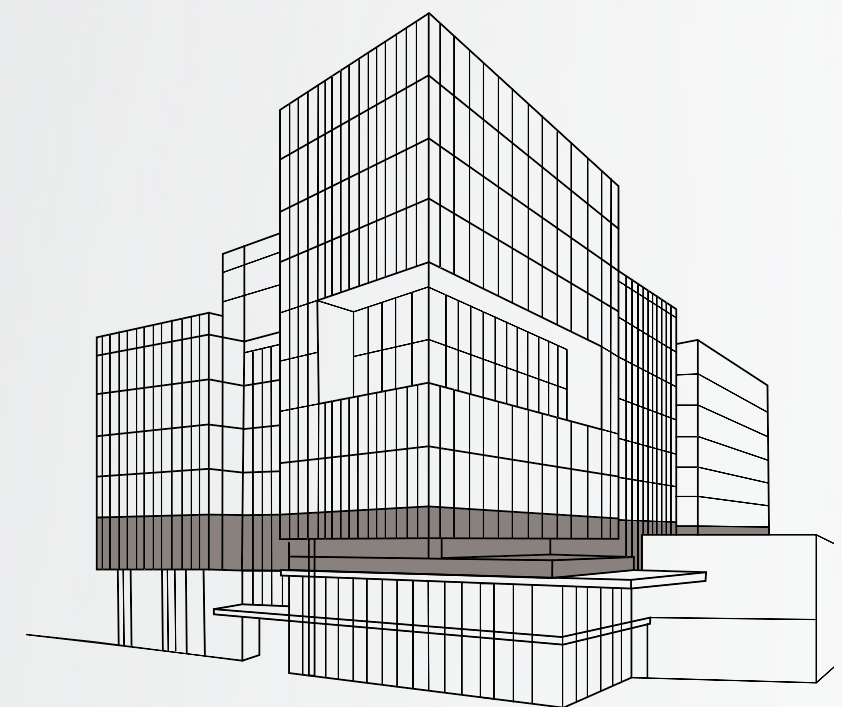
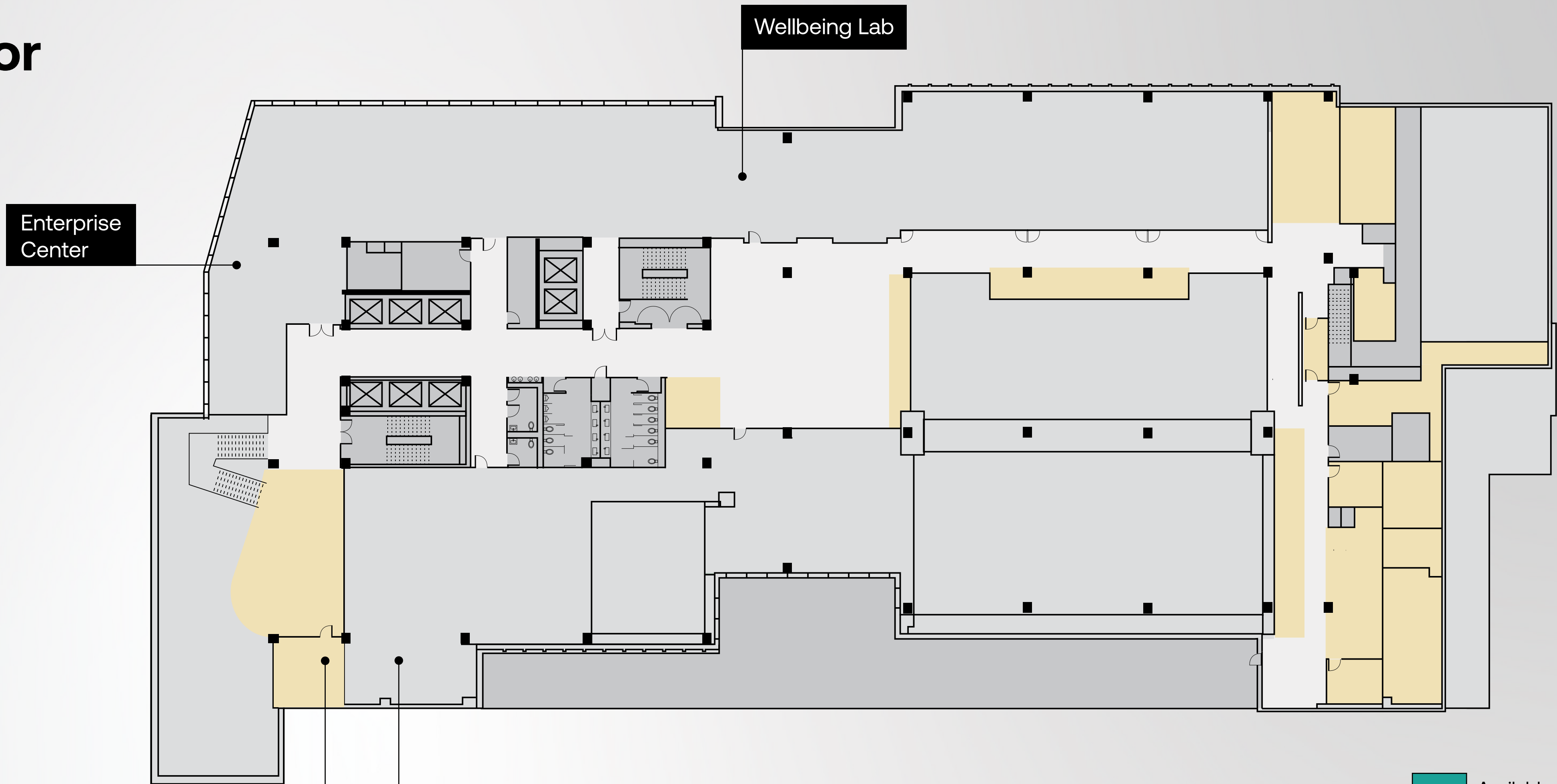
1st Floor




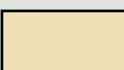
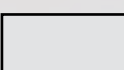
2,296 RSF



-  Available Commercial Space
-  Available Retail Space
-  Tech Lab
-  Amenities
-  Leased Space

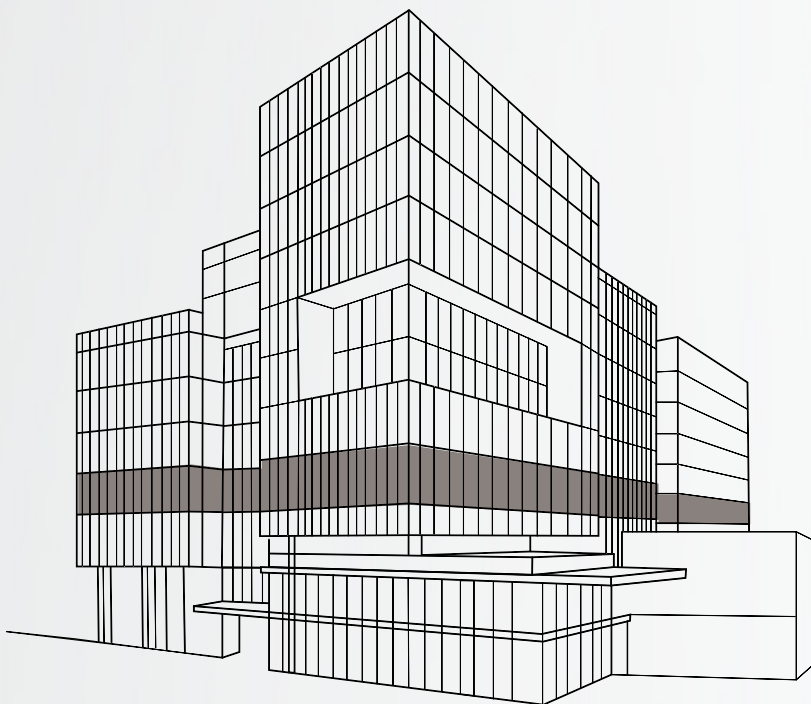
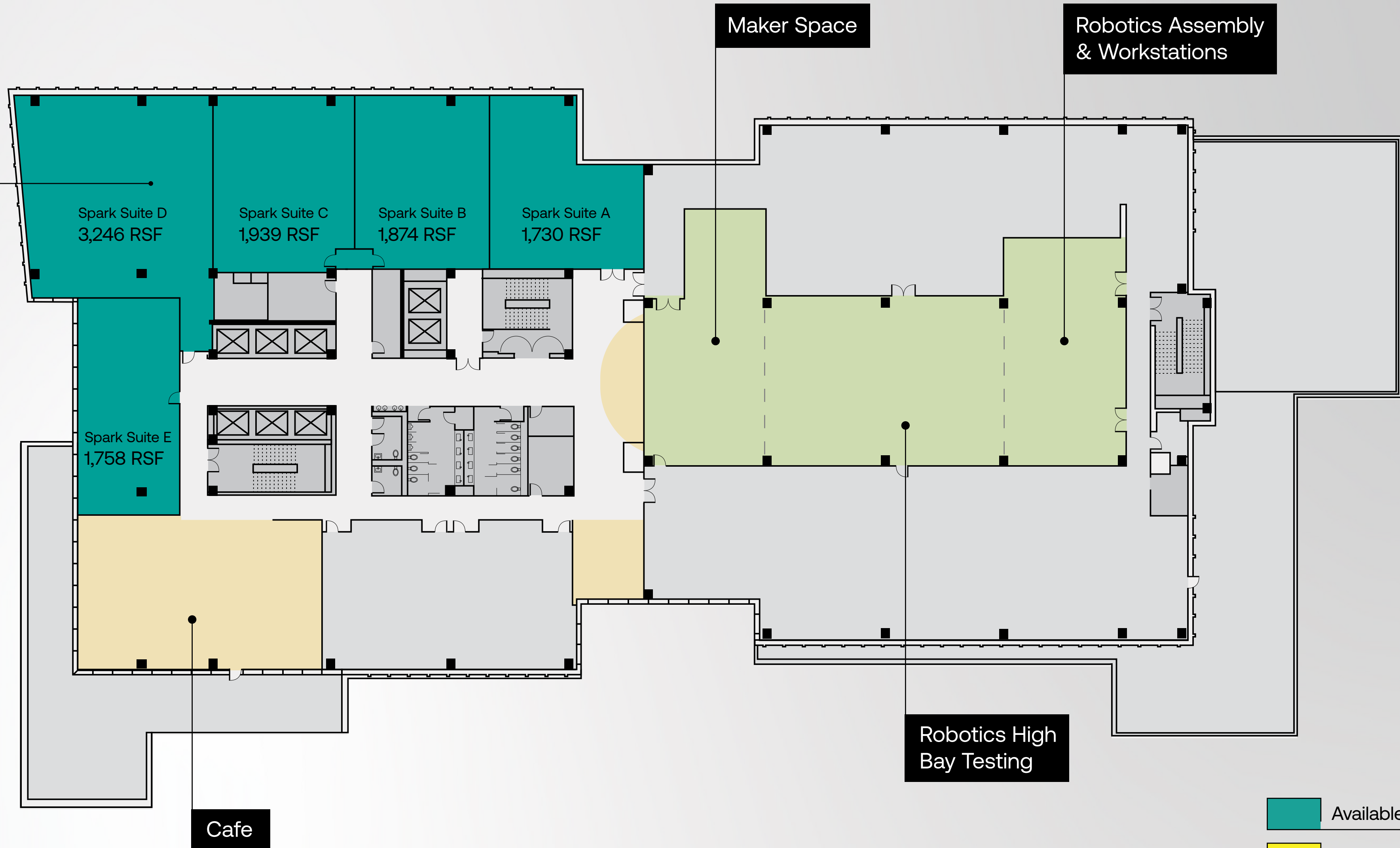
2nd Floor



-  Available Commercial Space
-  Available Retail Space
-  Tech Lab
-  Amenities
-  Leased Space

3rd Floor

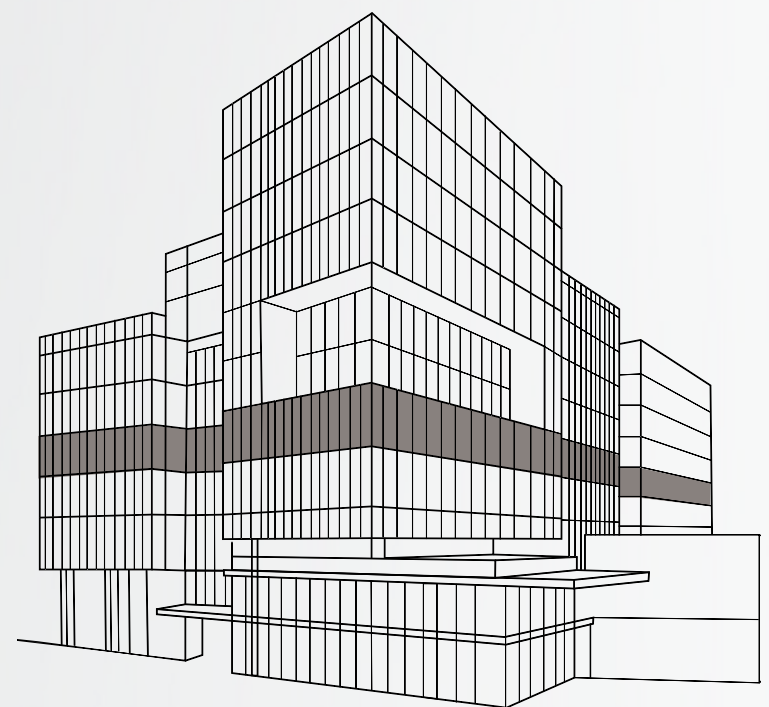
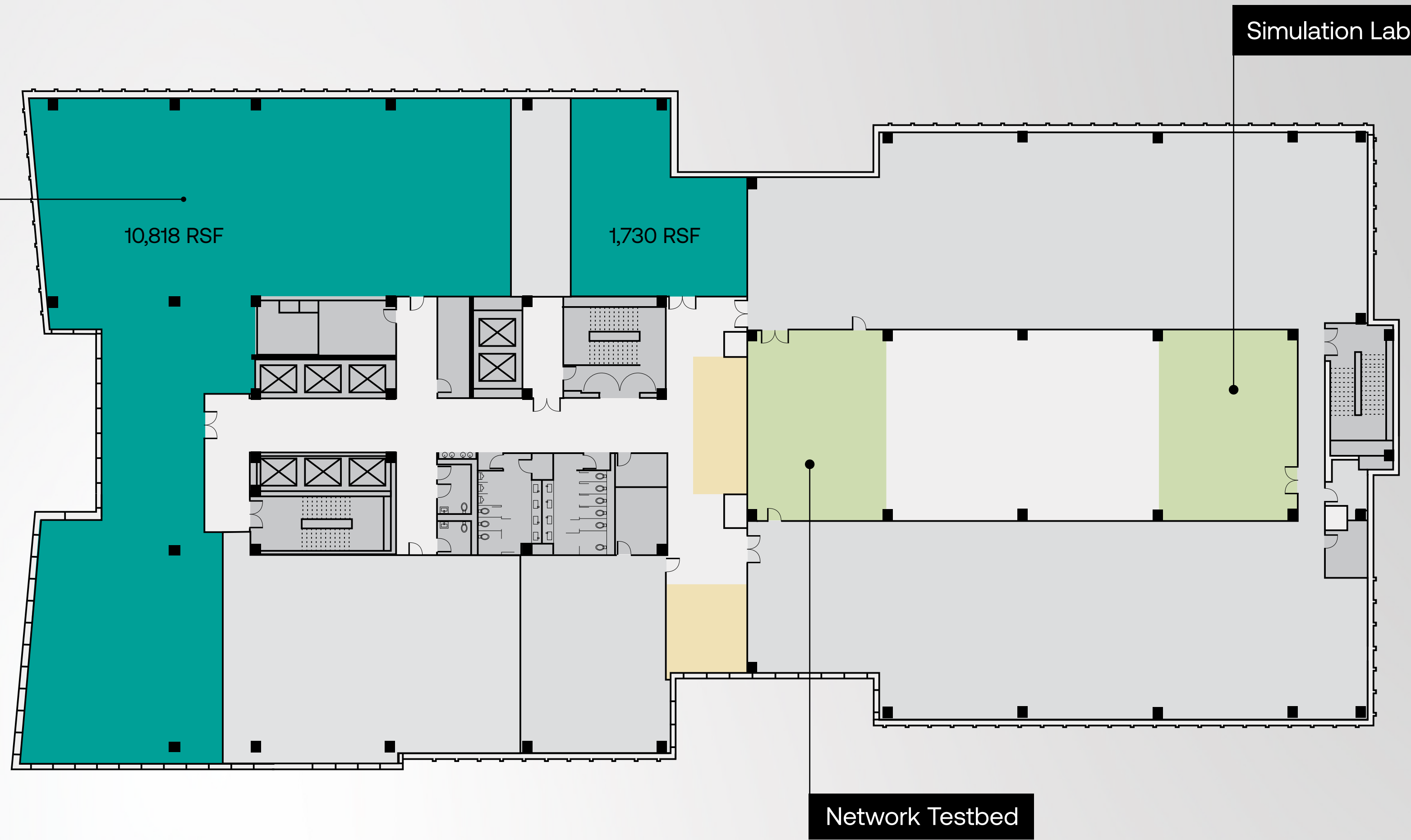
10,547 SF



- Available Commercial Space
- Available Retail Space
- Tech Lab
- Amenities
- Leased Space

4th Floor

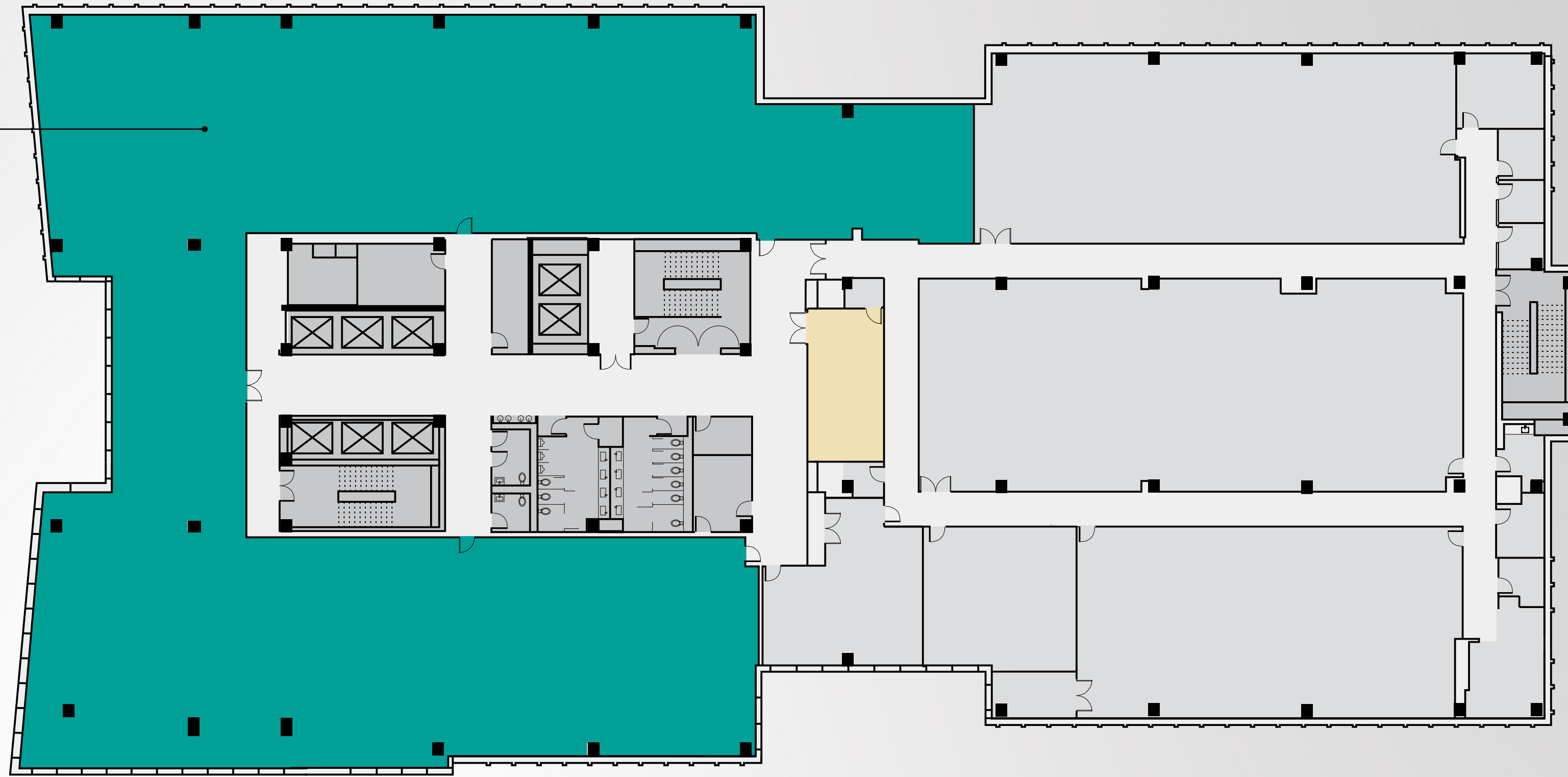
12,548 RSF



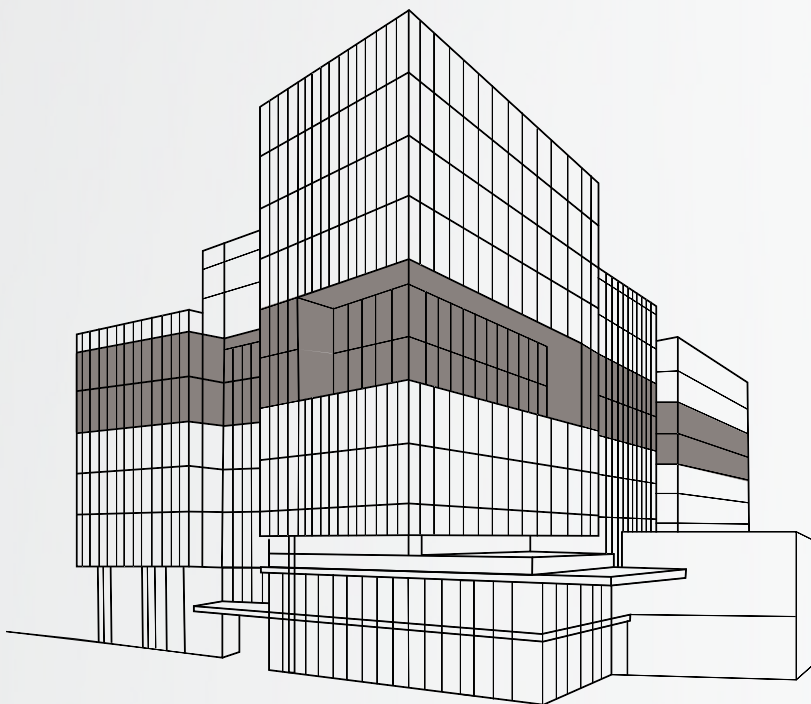
- Available Commercial Space
- Available Retail Space
- Tech Lab
- Amenities
- Leased Space



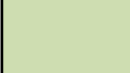

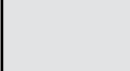
5th Floor

18,927 RSF



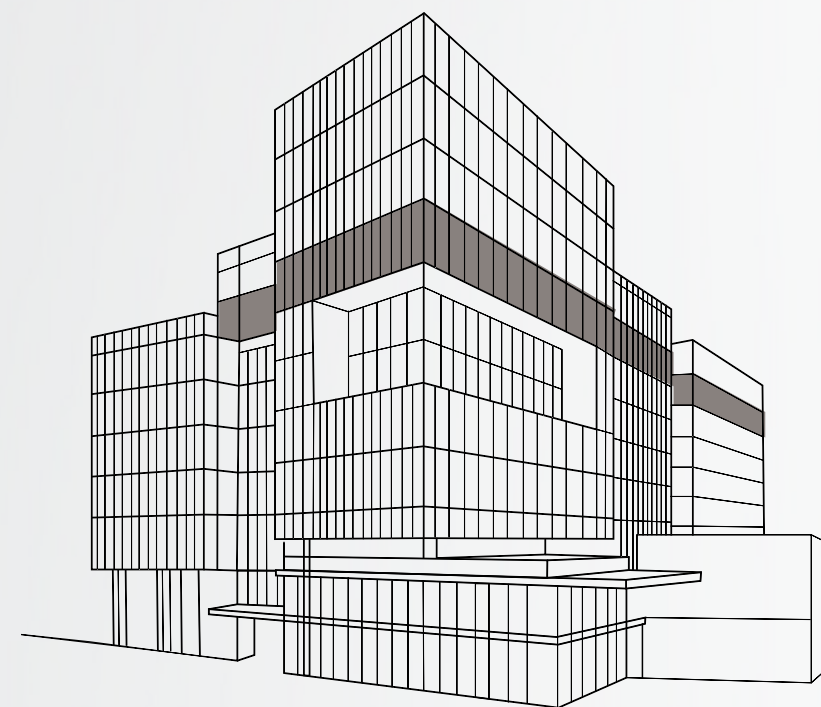
Secure Research Floor




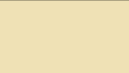
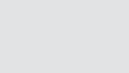


-  Available Commercial Space
-  Available Retail Space
-  Tech Lab
-  Amenities
-  Leased Space

6th Floor

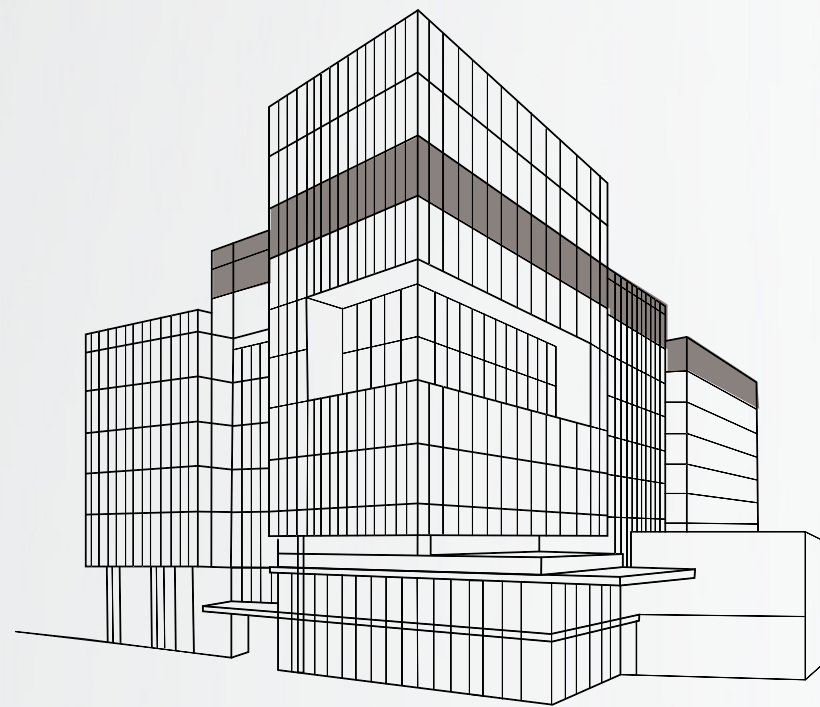
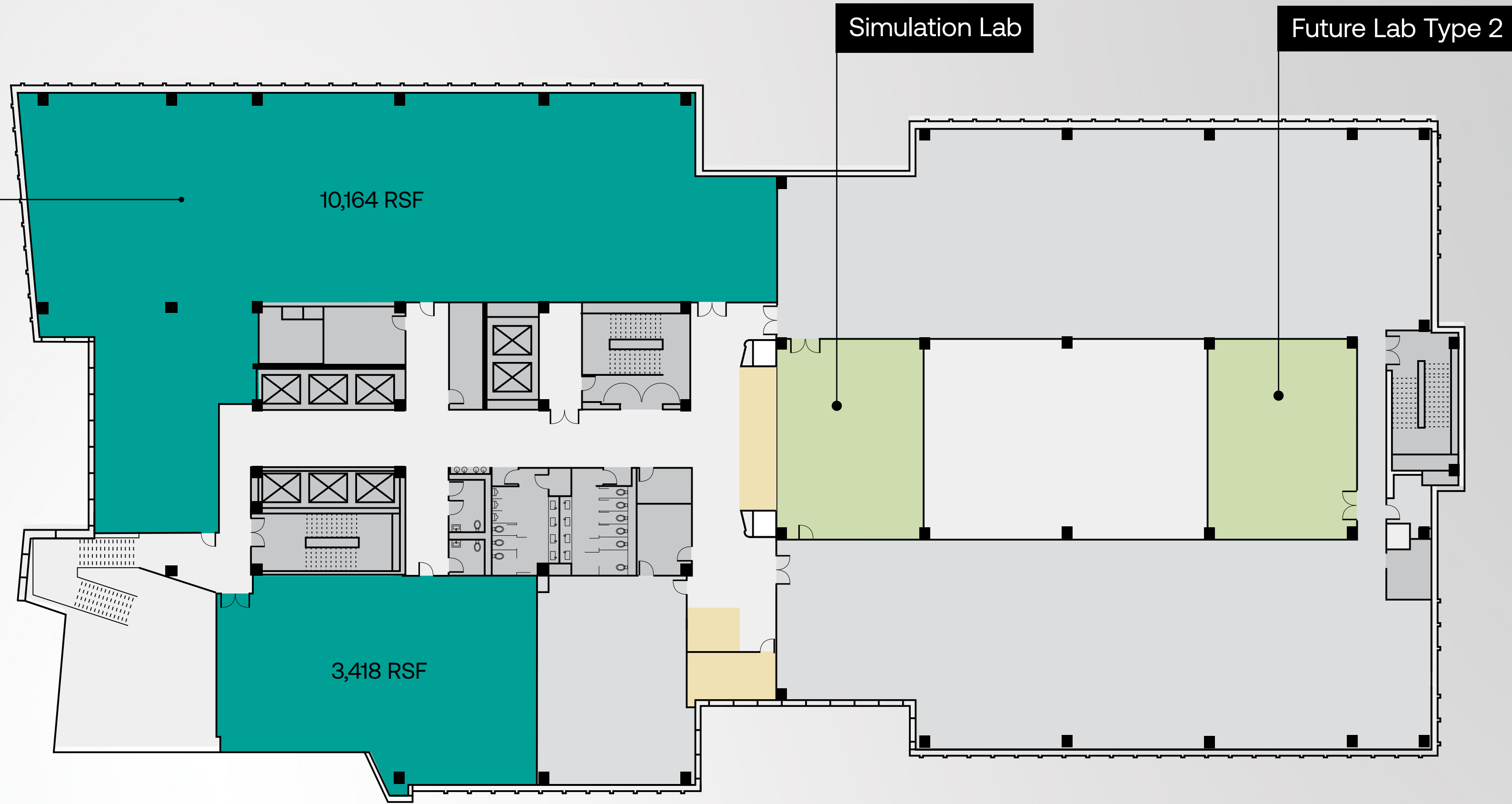
10,098 RSF



-  Available Commercial Space
-  Available Retail Space
-  Tech Lab
-  Amenities
-  Leased Space

7th Floor

13,582 RSF

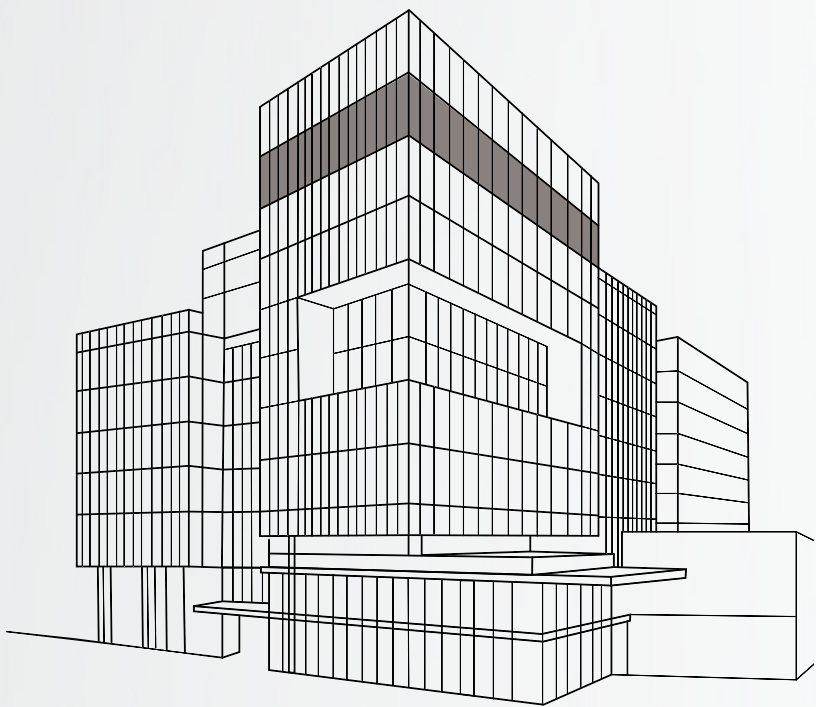




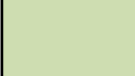
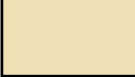
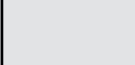
- Available Commercial Space
- Available Retail Space
- Tech Lab
- Amenities
- Leased Space

8th Floor

18,086 RSF

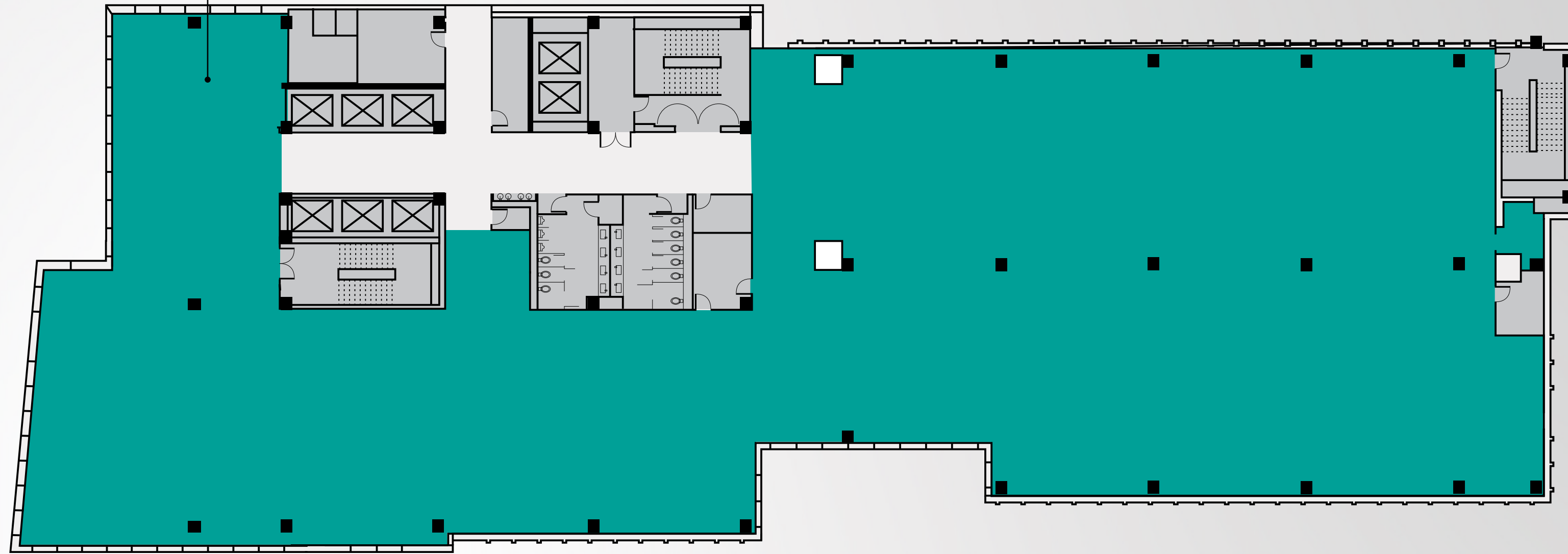
Outdoor Terrace



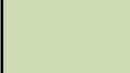

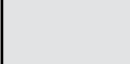


-  Available Commercial Space
-  Available Retail Space
-  Tech Lab
-  Amenities
-  Leased Space

9th Floor

26,804 RSF



-  Available Commercial Space
-  Available Retail Space
-  Tech Lab
-  Amenities
-  Leased Space



BRIAN NAUMICK

Vice President

brian.naumick@edgemoor.com

202.312.5780

NEWMARK

ANDY KLAFF

Executive Managing Director

andy.klaff@nmrk.com

703.918.0211

fuseatmasonsquare.com

FUSE

at Mason Square

